

PTH

Container Residential Community Project in Venezuela

1. Project No. : PTX5C365
2. Date : year 2012
3. Location : Venezuela
4. Scale: 478units container module
5. Category : Container house
6. Function : Affordable housing community
7. Characteristics : diversified functions, including public bathroom, laundry rooms, shower rooms, cold storage, clinics, residences and other functional buildings.



PROJECT DESIGN



PTH owns 100+ architect and engineers at home and abroad, to provide customized design service for client with different requirements. We use the relevant information data of construction projects as the basis of the model to build the building model, and simulate the real information of the building through digital information simulation.

At present, we have finished the Revit research and development of company' s products, laying a solid foundation to finish design effectively and accurately and also presenting details and three dimensional effects of our company' s products to customers.

Project Features:

In 2012, in order to solve the housing problem of low-income families, the Venezuelan government and American developers have jointly developed residential community projects. At that time, PTH was invited to participate in such an active and meaningful project.

The biggest feature of the project is the diversified functions, including public toilets, laundry rooms, shower rooms, cold storage, clinics, residences and other functional buildings. Whether it is the building itself or the interior decoration, PTH will fully consider all aspects of the basic needs of local residents and provide basic public facilities design for the community.

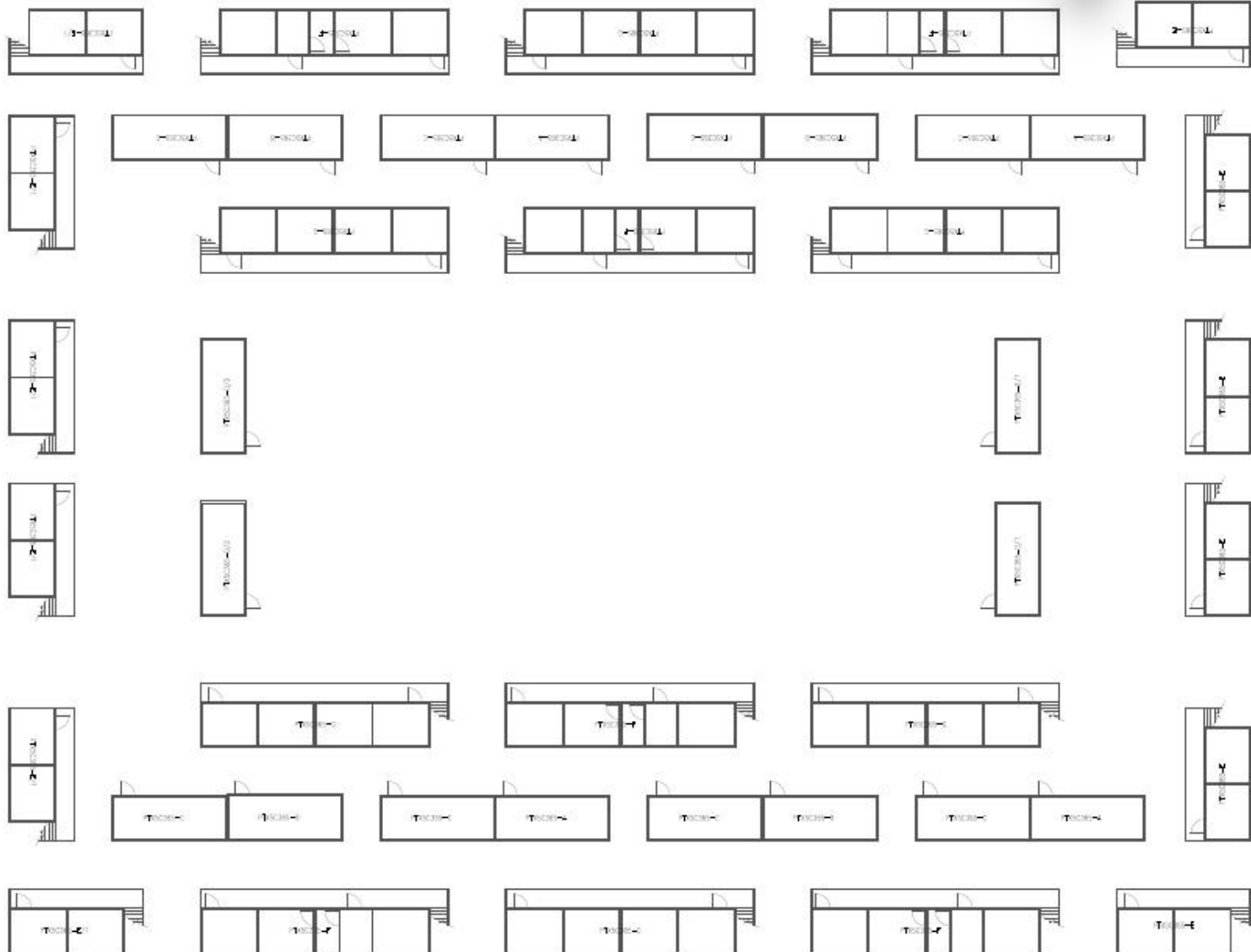
DESIGN



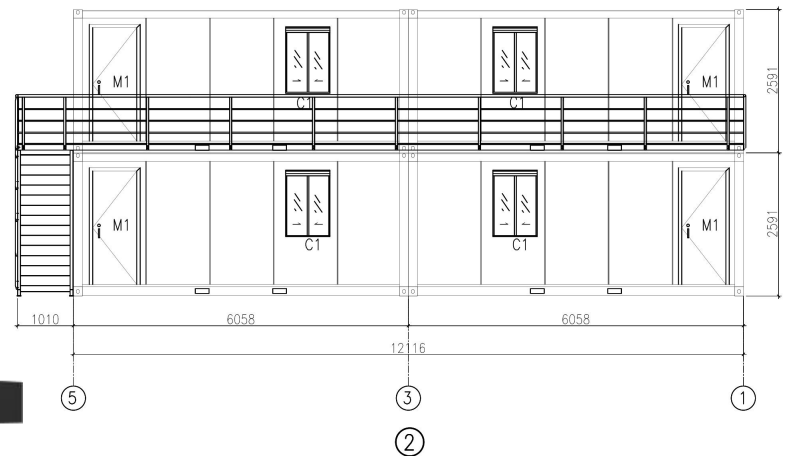
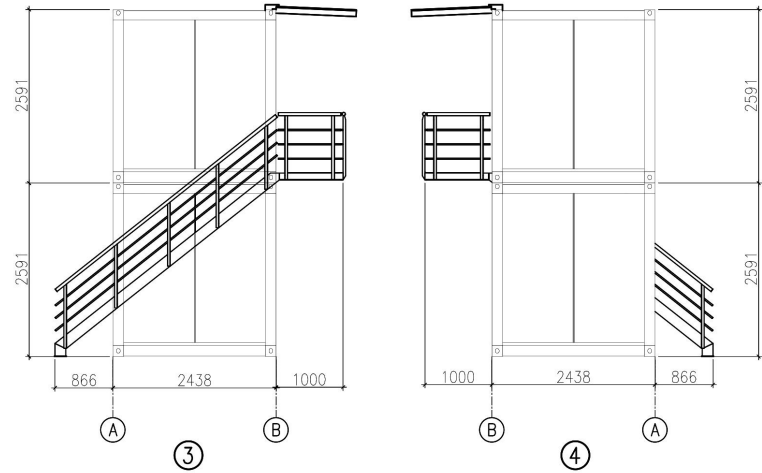
The preliminary design is made in accordance to client' s requirement and local building code. After getting the permission by local authority, PTH will do the shop drawing for production.

We built six residential communities with a total of 474 20ft container houses. The main structure of the building is a two-story container house with red frames and white wall panels to meet the political needs of the local government.

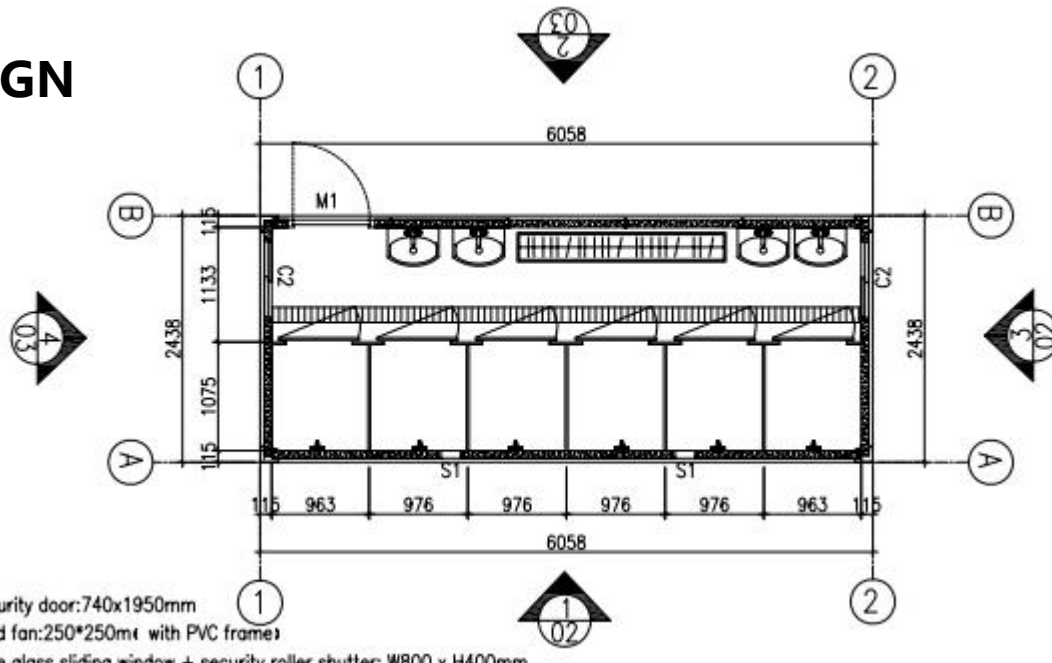
DESIGN



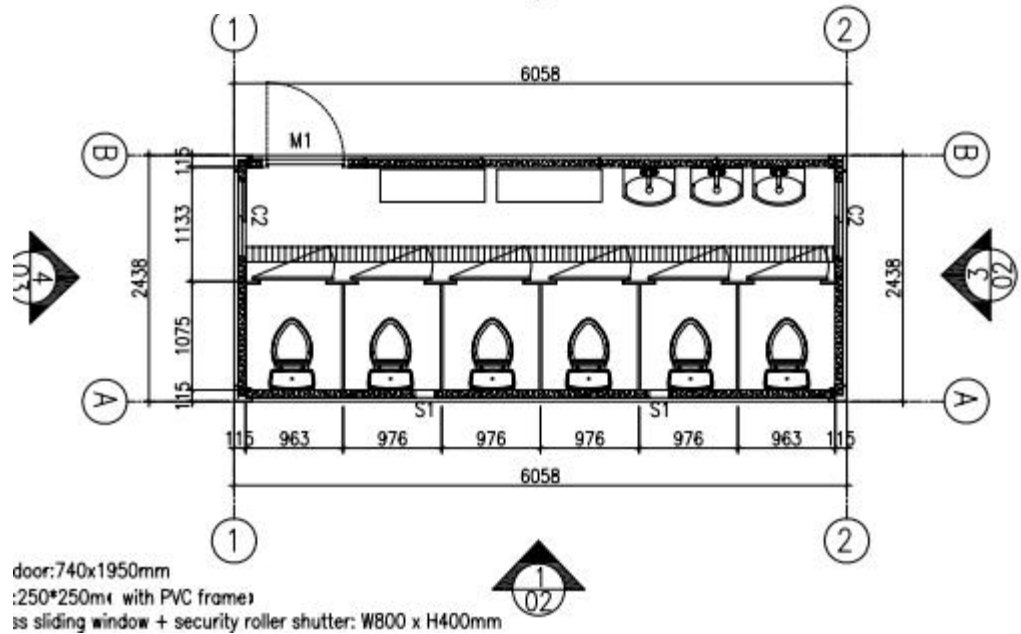
DESIGN



DESIGN



Security door: 740x1950mm
 isted fan: 250*250mm (with PVC frame)
 ingle glass sliding window + security roller shutter: W800 x H400mm

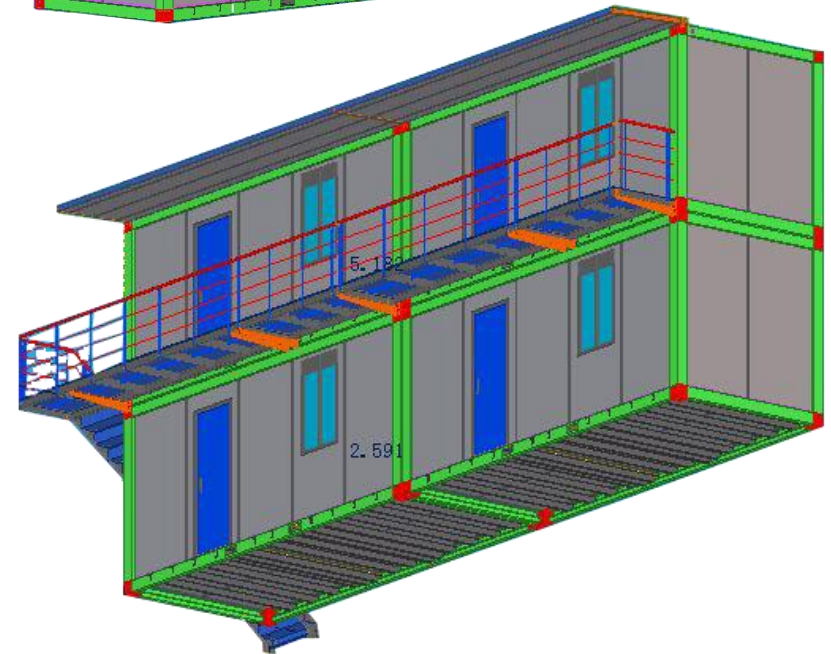
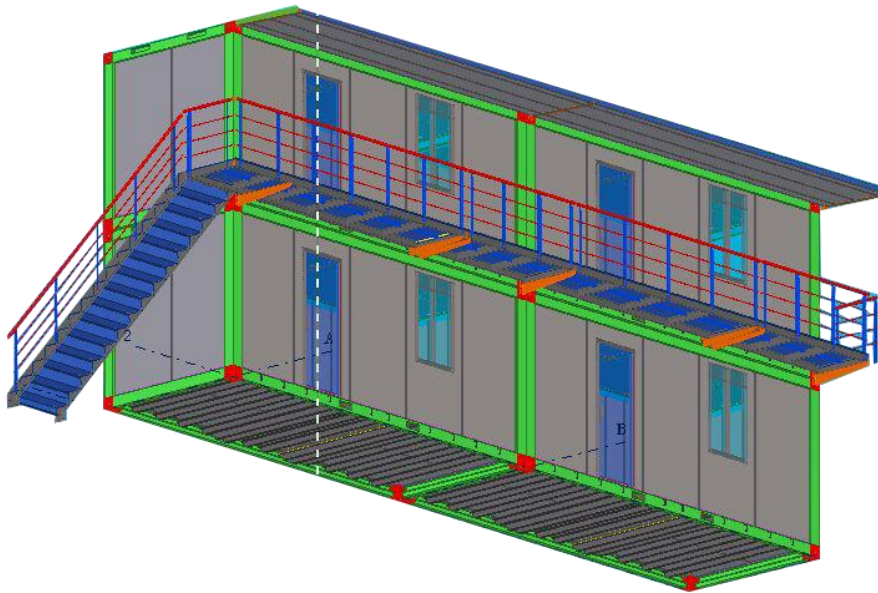
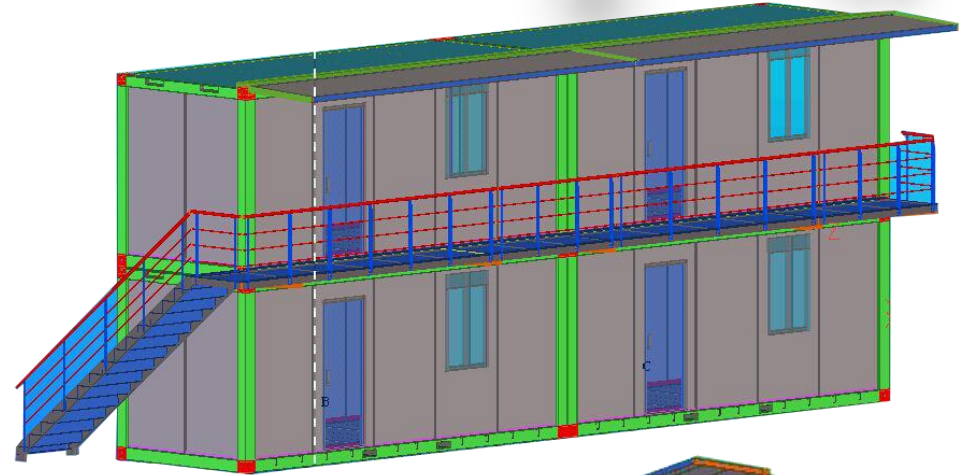


door: 740x1950mm
 : 250*250mm (with PVC frame)
 ss sliding window + security roller shutter: W800 x H400mm

DESIGN



PTH deepen design adopts Tekla and FRAMECAD Structure design software. Before making production drawing, manager will check whether the technical information of the design drawing is clear enough, and then carry out production drawing according to the final design drawing. When deepening the design, we will ensure that the product assembly size deviation standards, welding quality technical requirements, structural connection nodes, product anti-corrosion processes, etc. meet the design technical specifications.



PRODUCTION & DELIVERY



PROCUREMENT :

PTH has a mature procurement supply chain, including product raw materials, kitchen and bathroom accessories, home equipment and other supporting facilities. Each year, PTH conducts quality assessments of suppliers, resolutely rejects unqualified suppliers, and guarantees the quality of products from the source.

PRODUCTION :

PTH owns hundreds of fully automatic mechanized production lines, which ensures high production efficiency and timely delivery. In the manufacturing process, PTH can provide production progress reports to customers through pictures and video.

PTH has a professional quality inspection team which takes strict quality control in each process, and make sure defect product never be delivered to client.

TRANSPORTATION :

PTH, who has more than 20 years of international logistics experience. can provide customers with the best transportation routes, customs declaration, commodity inspection and other services, and truly realizes "door to door."



PRODUCTION PICTURES



Quality is the life of a enterprise and the foundation of sustainable development. PTH strictly follows the ISO9000 quality system and make quality control in each process from material procurement to finish product delivery.

For the outsourcing raw material and accessories, it is reported to the ICQC team for inspection. ICQC will inspect according to "Raw Material Inspection Regulations", make sure the material technical specs and quality meets GB standard, then upload the inspection record, QC document and test report to ERP system.



PRODUCTION PICTURES



PTH makes random inspection system for the manufacturing process. IPQC makes daily random inspection according to the quality requirement of each order, so as to avoid defect products.

The production team also set up process quality report system. Only those qualified products can be transferred to the next process.



PACKAGE & LOADING



PTH makes the most reasonable package plan according to the structure characteristics and quality requirement. The modular package design of the spare part effectively reduce the package volume. The spare parts of each module is packed in a separate package, these small package modular combination ensures a easy transportation and installation, which in return makes the loading and unloading much easier, and greatly reduces labor cost.



INSTALLATION



PTH will provide complete and detailed installation drawings for the product. PTH has professional photography and post-production personnel who can provide installation videos for the product and intuitively demonstrate the installation steps and installation details of the product.

PTH owns on-site installation guidance experience for dozens of projects such as Mozambican light steel villa resorts, Chilean container camps, etc. It can provide EPC construction services and technical guidance according to the needs of customers to ensure the smooth and safe construction of the houses required by customers and realize real "Check-in".



CLIENT FEEDBACK



We use BIM system to manage and operate the whole project. For the maintenance, PTH provide online technical support or maintenance service on the site per client requirement.

PTH issued installation drawings and installation videos, which were installed by the local construction team. Since the client has collaborated with PTH on other projects before, we are very confident about the quality and service of PTH. We are also very timely in responding to customer needs, and often take the initiative to communicate with customers to confirm project details.

CLIENT FEEDBACK



CLIENT FEEDBACK



CLIENT FEEDBACK



We are honored to participate in this meaningful project. The community makes people happy and content to enjoy the care and welfare from government. It achieves the aim of solving the housing problems of local low-income families.

