

PTH

Philippine Container Hotel

1. Project No : PT160158
2. Project time : 2016
3. Project site : Philippine
4. Project scale : 72*20ft container+1*8ft container
5. Product type : container
6. Usage : Training school accommodation
7. Project features: the roof of the box strictly meets the requirements of first-class fire protection, and the pipeline system adopts the method of pipeline well



Project Design



PTH has more than 100 R&D design and technical engineers from home and abroad, and provides customized design services. Using the relevant information data of the construction project as the basis of the model, the building model is established, and the real information of the building is simulated through digital information simulation. At present, we have completed the research and development of the Revit family library of various products of the company, laying the foundation for efficient and accurate design, and at the same time can fully show the detailed nodes and three-dimensional effects of our company's products to customers.

Project characteristics: The design of this project involves many professions, including architecture, structure, indoor and outdoor water supply and drainage, indoor and outdoor electricity and weak and outdoor rainwater collection and septic tank design. The project difficulty coefficient and quality requirements are relatively high.

The method of box roof and many details are handled by special methods, so that the box roof of this project strictly meets the requirements of first-class fire protection. In addition, the pipeline system of this project adopts the method of pipeline well. In particular, it is necessary to mention that in order to reduce the commissioning workload of on-site installation, we added the method of positioning cones at the bottom of the box, which is often seen in domestic projects. In this project, in order to meet the customer's deodorant function requirements, we adopted the deodorant floor drain method under the drain.

3D view



PTH's design drawings are designed according to customer needs and local building codes. After obtaining the local government's permission, they can finally continue to deepen the design after passing the local government's review.



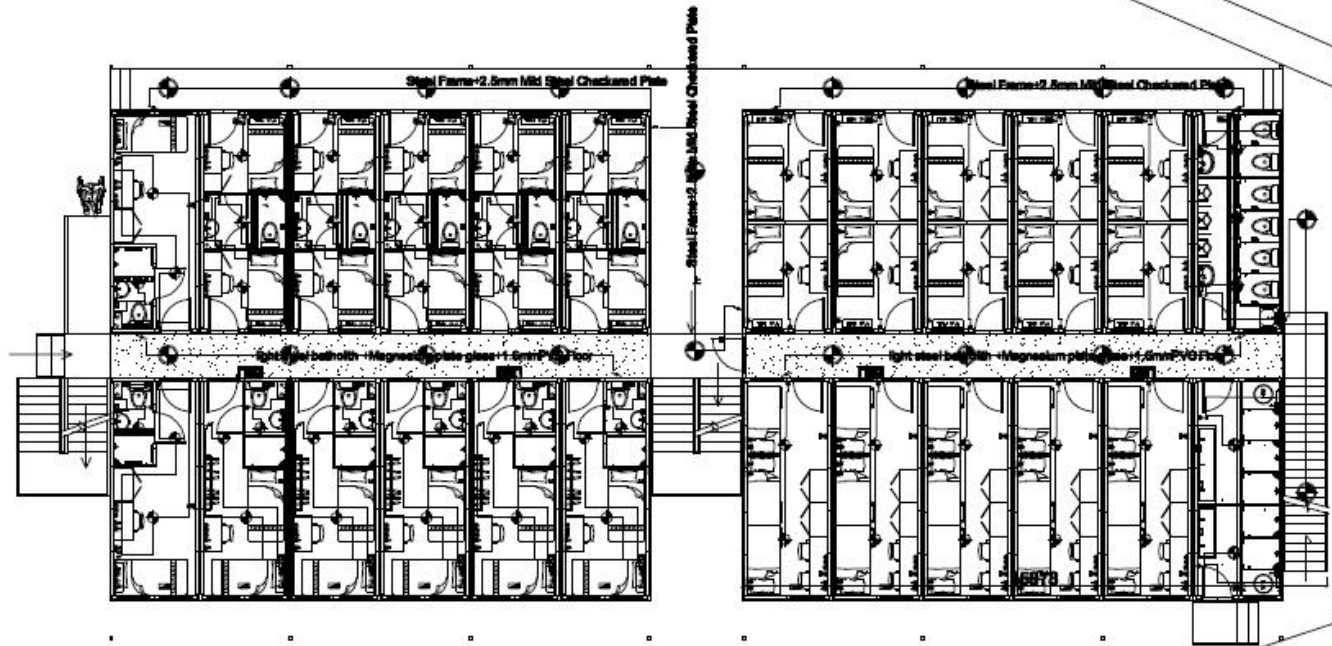
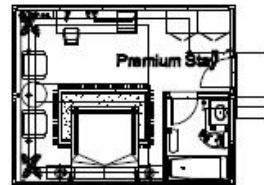
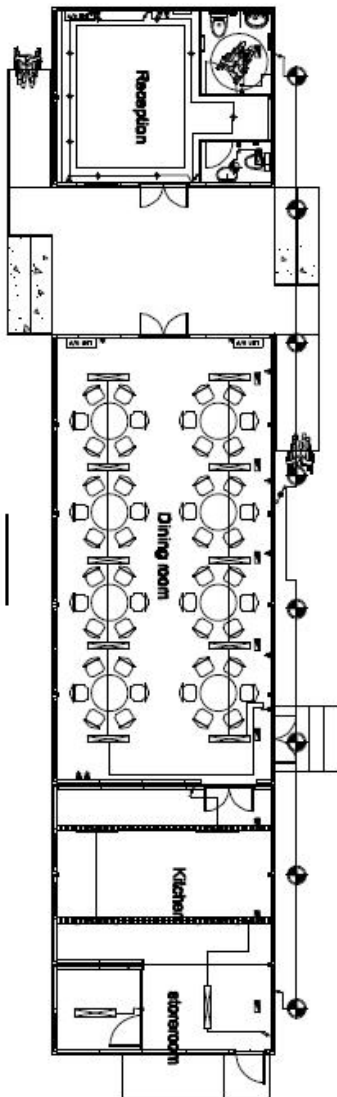
Interior view



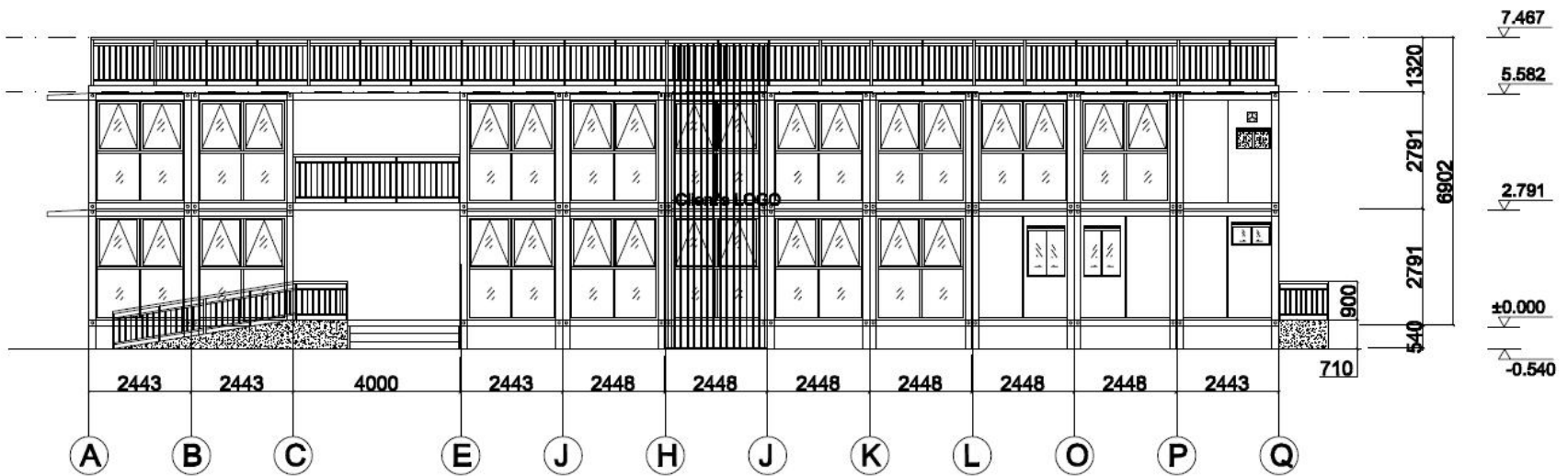
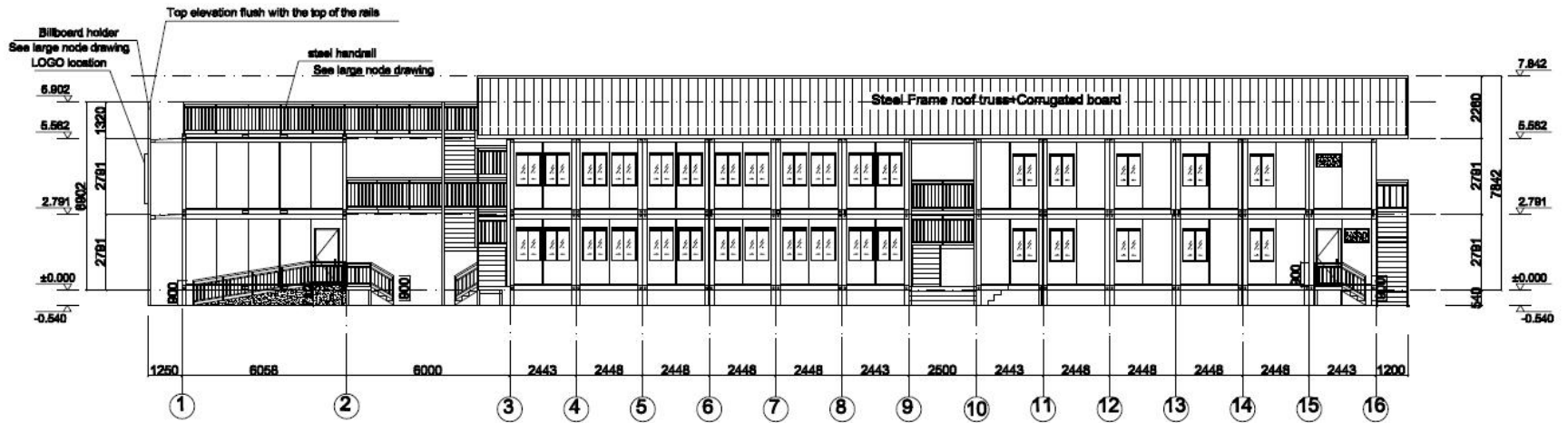
Interior view



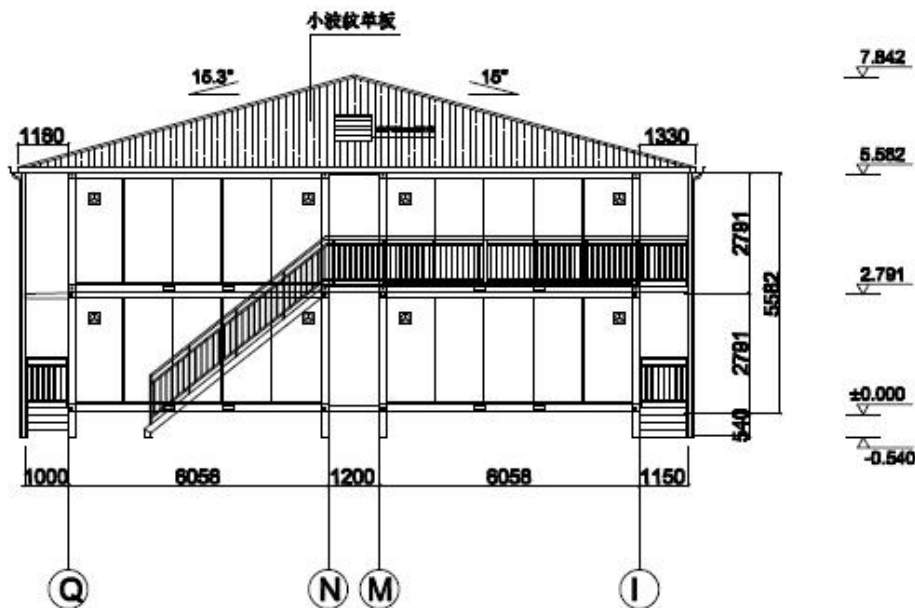
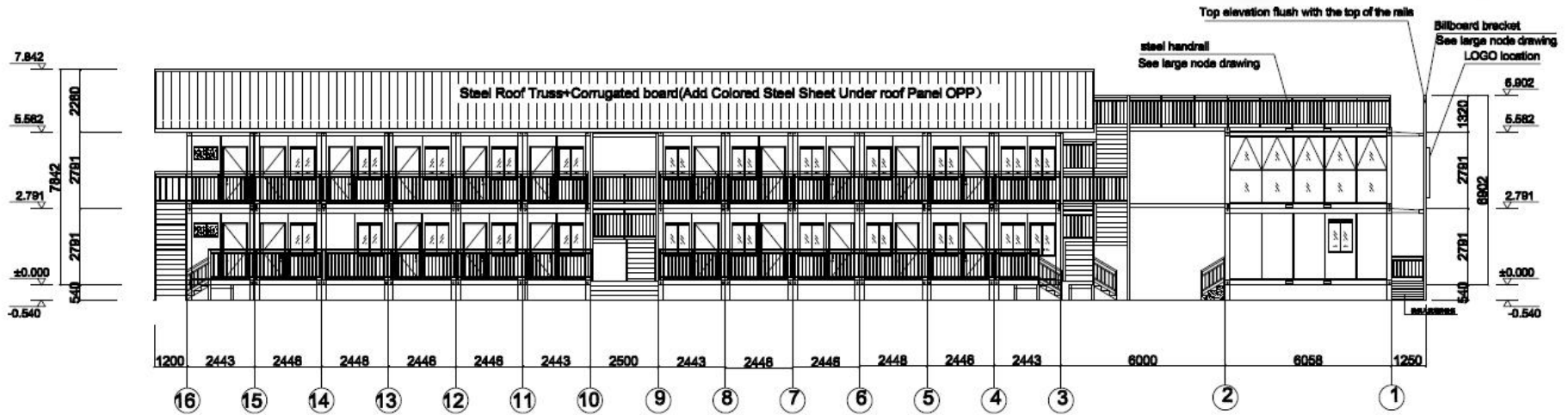
Layout plan



Elevation



Elevation



3D Sketch



3D Sketch



Production delivery



purchase

PTH has a mature procurement supply chain, including product raw materials, kitchen and bathroom accessories, household equipment and other supporting facilities.

produce:

PTH has hundreds of fully automated mechanized production lines, which can be combined with efficient production arrangements to provide a strong guarantee for timely delivery of customer orders.

transport:

PTH has more than 10 years of international logistics experience, and can provide customers with the best transportation routes, customs declaration, commodity inspection and other services.



Project production scenarios



PTH follows the ISO9000 quality system document framework, and manages and controls the products. From the beginning of raw material procurement, we strictly control and control.

The original and auxiliary materials and outsourced products need to be inspected. ICQC conducts inspection according to the "original and auxiliary material inspection standards" and confirms that the material quality/information meets the requirements of the design specifications. ICQC uploads the material inspection records, quality documents, and experimental reports to the ERP system.

Project production scenarios



PTH formulates a product inspection mechanism. IPQC avoids the occurrence of batch quality accidents according to the technical requirements of the ordered products, and conducts irregular inspections every working day. The PTH production department has also set up a product process quality inspection mechanism.



Packing and loading

PTH designs reasonable packaging solutions based on product characteristics/customer requirements. Each unit component adopts independent small packaging, which is convenient for transportation and installation. At the same time, it is easy to load and unload, which reduces the labor cost.



Project Installation



PTH will provide complete and detailed installation drawings for the products. Or the product provides installation video to intuitively display the installation steps and installation details of the product.

In addition, EPC services and technical guidance can be provided according to customer needs to ensure the smooth and safe construction of the house.



Project installation



Project installation



Project installation



**URL : www.pthhouse.com / www.putianhouse.com
E-mail : inquiry@putianhouse.com**

Customer feedback

• • PTH! •

We use the BIM system to manage and operate the entire project. PTH can provide remote telephone consultation and guidance according to customer needs, or can provide on-site maintenance and repair services according to customer needs.

PTH has always solved any customer's needs in a fast, high-quality and responsible manner, and actively communicated with the customer to confirm the project details, which was finally highly recognized by the customer.

URL : www.pthhouse.com / www.putianhouse.com
E-mail : inquiry@putianhouse.com

Customer provide project photos



URL : www.pthouse.com / www.putianhouse.com
E-mail : inquiry@putianhouse.com

Customer provide project photos



Customer provide project photos



Customer provide project photos

