

PTH

Container house in Finland

- 1.Date : year 2013
- 2.Location : Finland
- 3.Scale : 3x20ft ;
5x20ft
4. Category :
container
house+pitched roof
- 5.Function :
dormitory, meeting
room
6. Characteristics :
load and insulation
meet Northern
Europe standards,
small area living
housing solutions



PROJECT DESIGN



PTH owns 100+ architect and engineers at home and abroad, to provide customized design service for client with different requirements. We use the relevant information data of construction projects as the basis of the model to build the building model, and simulate the real information of the building through digital information simulation.

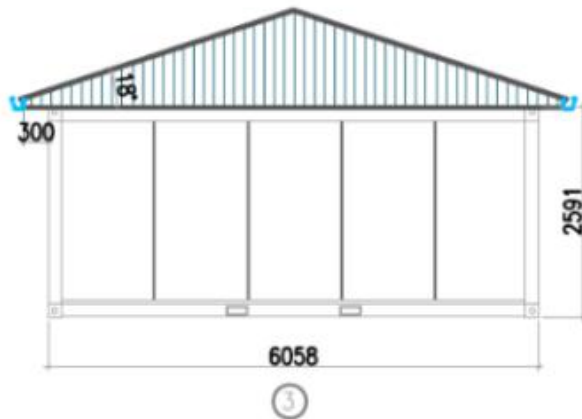
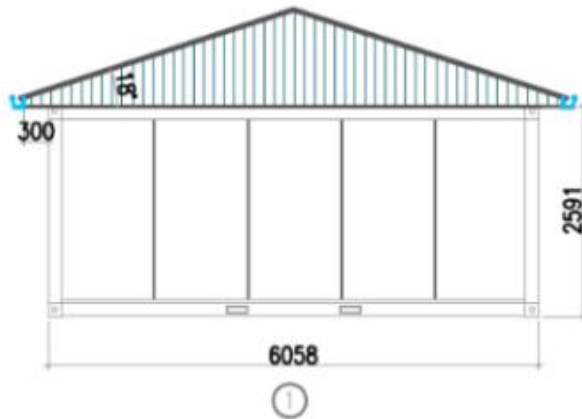
At present, we have finished the Revit research and development of company's products, laying a solid foundation to finish design effectively and accurately and also presenting details and three dimensional effects of our company's products to customers.

Project features :

A small dormitory house in Finland consists of 3 units of 20ft container and a pitched roof. Two of 20ft container contain a side toilet and a bedroom. The middle container is used as a living room, dining room and kitchen. In addition, 5 units of 20ft container are combined to form a large conference room.

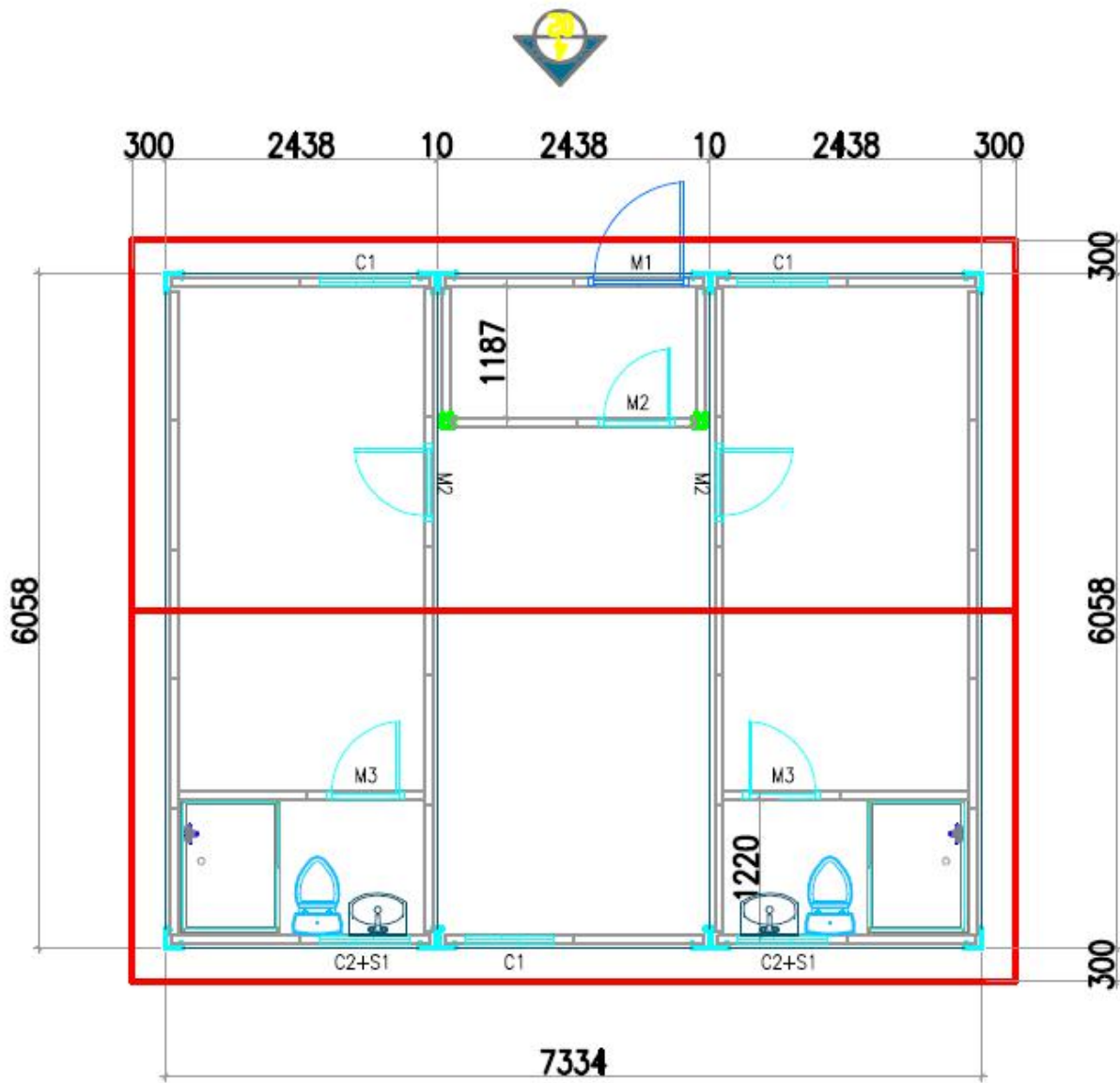
The load and insulation of the house are designed according to the standards of the Northern Europe. The roof and floor are 100mmPU insulated, the windows are triple-glazed, and the power and bathroom are CE certified. PTH provides a one-stop service, interior furniture, bed, wardrobe, dining table and electrical parts are all provided by PTH.

DESIGN

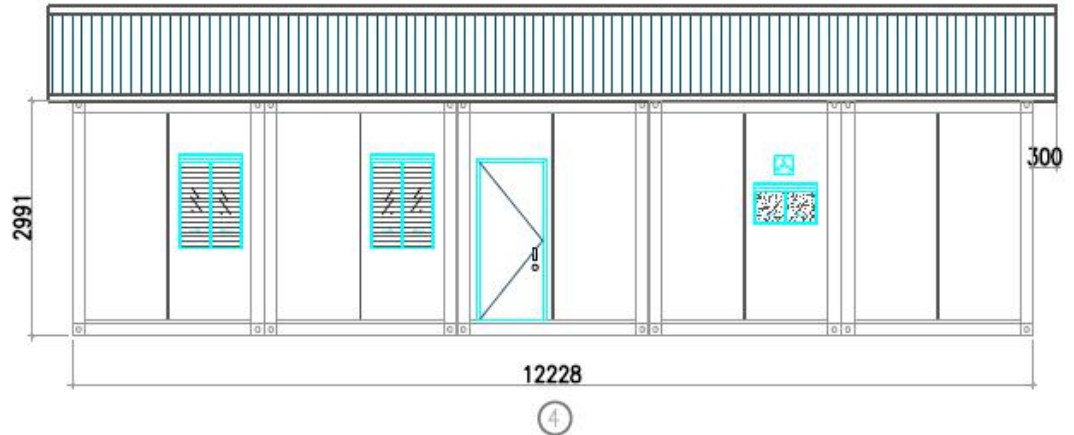
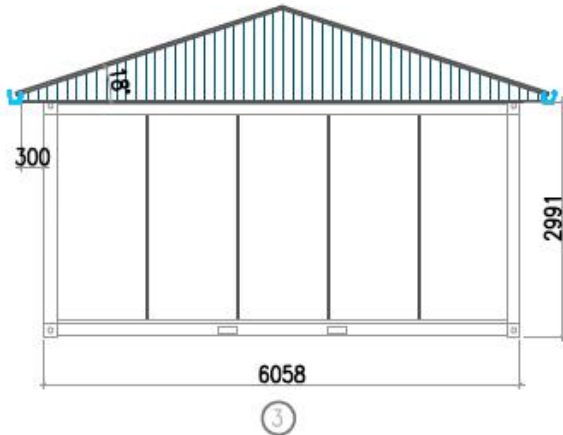
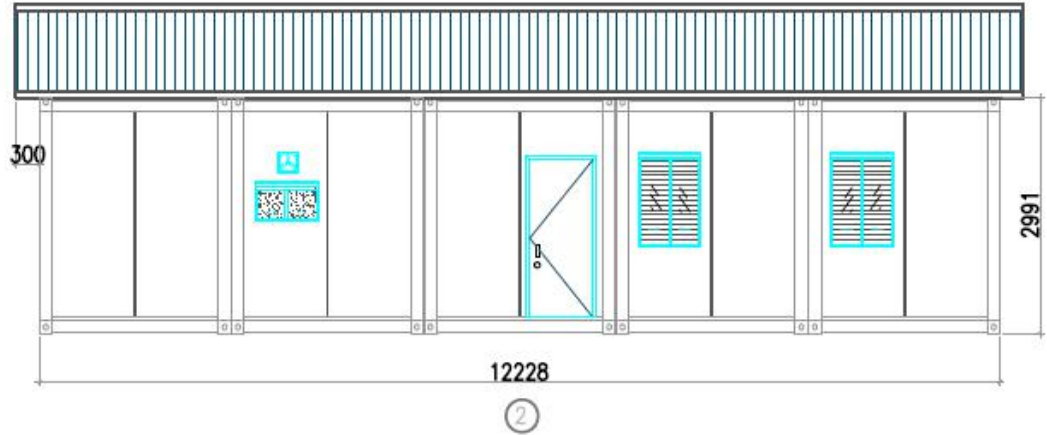
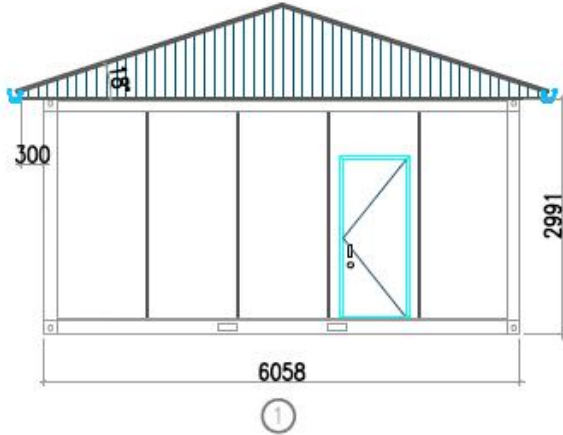


The preliminary design is made in accordance to client's requirement and local building code. After getting the permission by local authority, PTH will do the shop drawing for production.

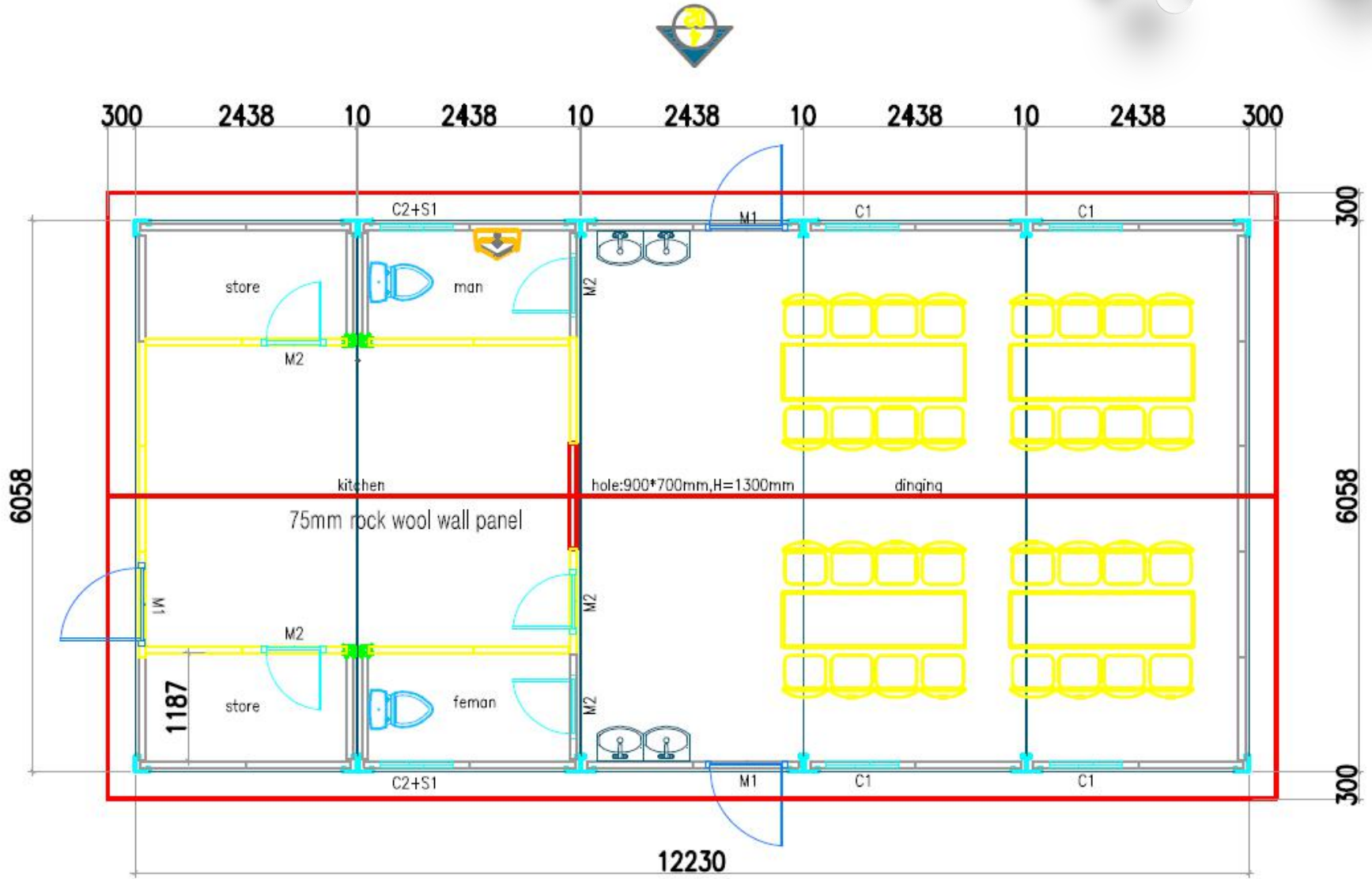
设



DESIGN



DESIGN



PRODUCTION AND DELIVERY



PROCUREMENT :

PTH has a mature procurement supply chain, including product raw materials, kitchen and bathroom accessories, home equipment and other supporting facilities. Each year, PTH conducts quality assessments of suppliers, resolutely rejects unqualified suppliers, and guarantees the quality of products from the source.

PRODUCTION :

PTH owns hundreds of fully automatic mechanized production lines, which ensures high production efficiency and timely delivery. In the manufacturing process, PTH can provide production progress reports to customers through pictures and video.

PTH has a professional quality inspection team which takes strict quality control in each process, and make sure defect product never be delivered to client.

TRANSPORTATION :

PTH, who has more than 20 years of international logistics experience. can provide customers with the best transportation routes, customs declaration, commodity inspection and other services, and truly realizes "door to door."



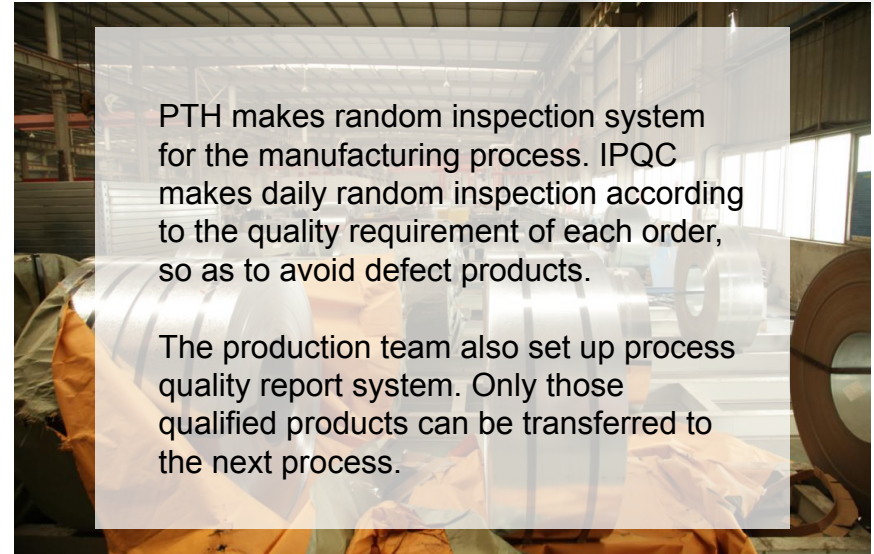
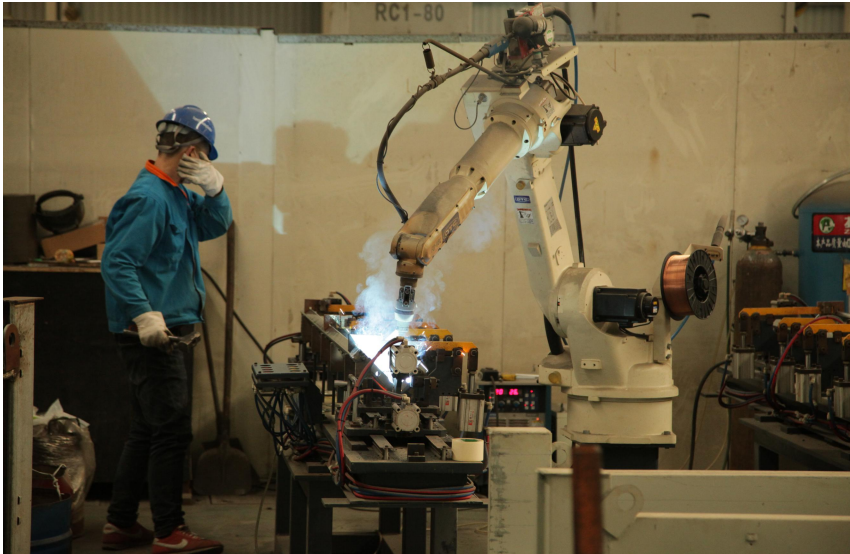
PRODUCTION



Quality is the life of a enterprise and the foundation of sustainable development. PTH strictly follows the ISO9000 quality system and make quality control in each process from material procurement to finish product delivery.

For the outsourcing raw material and accessories, it is reported to the ICQC team for inspection. ICQC will inspect according to “Raw Material Inspection Regulations”, make sure the material technical specs and quality meets GB standard, then upload the inspection record, QC document and test report to ERP system.

PRODUCTION



PTH makes random inspection system for the manufacturing process. IPQC makes daily random inspection according to the quality requirement of each order, so as to avoid defect products.

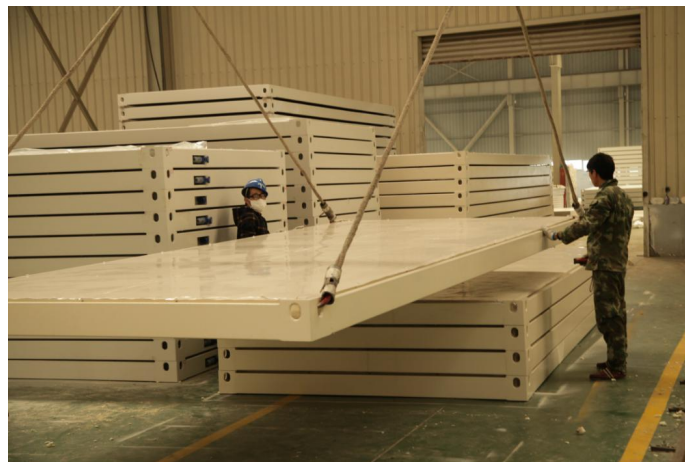
The production team also set up process quality report system. Only those qualified products can be transferred to the next process.



PACKAGE & LOADING




PTH makes the most reasonable package plan according to the structure characteristics and quality requirement..The modular package design of the spare part effectively reduce the package volume. The spare parts of each module is packed in a separate package, these small package modular combination ensures a easy transportation and installation, which in return makes the loading and unloading much easier, and greatly reduces labor cost.



INSTALLATION

PTH

A photograph showing two construction workers on the roof of a portable building. They are working on a white metal truss structure. One worker is on the left, wearing a dark jacket and a headlamp, and the other is on the right, wearing a blue jacket. A wooden ladder is leaning against the side of the building. The building has a white door and a window. In the background, there is another building with red and white siding and several windows. The ground is wet, suggesting it might be raining or has recently rained.

PTH will provide complete and detailed installation drawings for the product. PTH has professional photography and post-production personnel who can provide installation videos for the product and intuitively demonstrate the installation steps and installation details of the product.

PTH owns on-site installation guidance experience for dozens of projects such as Mozambican light steel villa resorts, Chilean container camps, etc. It can provide EPC construction services and technical guidance according to the needs of customers to ensure the smooth and safe construction of the houses required by customers and realize real "Check-in".

INSTALLATION



CLIENT FEEDBACK



We use BIM system to manage and operate the whole project. For the maintenance, PTH provide online technical support or maintenance service on the site per client requirement.

The design, functionality and practicality meet the basic needs of customers, and the comfort of living is also very high. This house is very popular in the local area.

PHOTOS



PHOTOS



PHOTOS

