

PTH

LGS villa in Guadeloupe

1. Project No. : PT160665
2. Date : 2016年
3. Location : Guadeloupe
4. Scale : 2 sets 69m² villa + 1 set 107m² villa
5. Category : LGS villa
6. Function: Real Estate development
7. Characteristics : It is real estate development projects, there are two models , with local shapes and special requirements for color maintenance.



Design



PTH owns 100+ architect and engineers at home and abroad, to provide customized design service for client with different requirements. We use the relevant information data of construction projects as the basis of the model to build the building model, and simulate the real information of the building through digital information simulation.

At present, we have finished the Revit research and development of company's products, laying a solid foundation to finish design effectively and accurately and also presenting details and three dimensional effects of our company's products to customers.

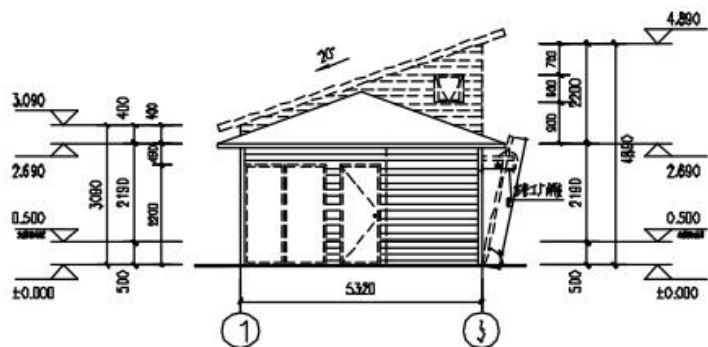
Project features: The client is a real estate developer in Guadeloupe, and the project is a sample order of real estate projects. There are two apartment types: a large apartment area of 107m², two floors, two bedrooms, one bathroom, one kitchen and one living room; a small apartment area of 69m², one bedroom, one bathroom, one kitchen and one living room. Customers have clear requirements for materials, etc.

DESIGN

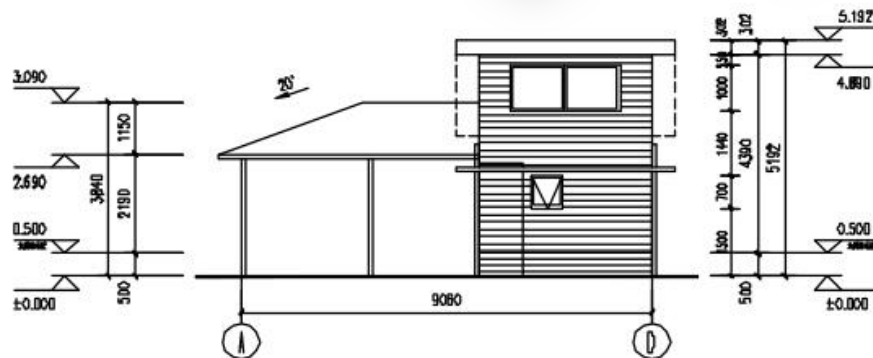
The preliminary design is made in accordance to client' s requirement and local building code. After getting the permission by local authority, PTH will do the shop drawing for production.



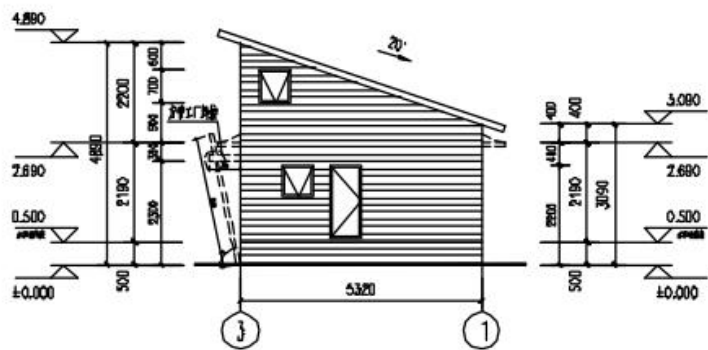
DESIGN



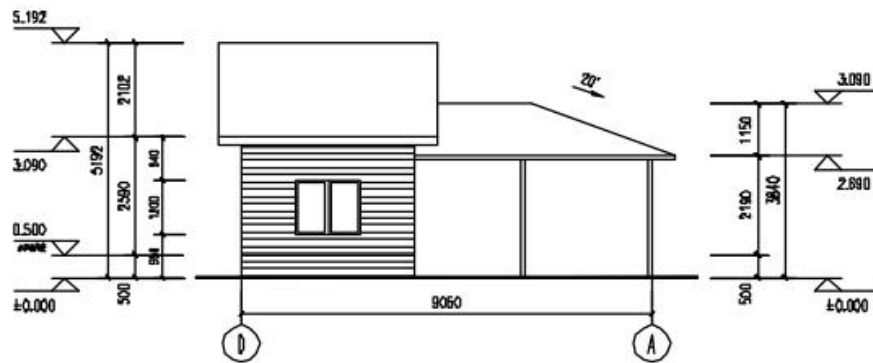
1-3 立面图 1:100



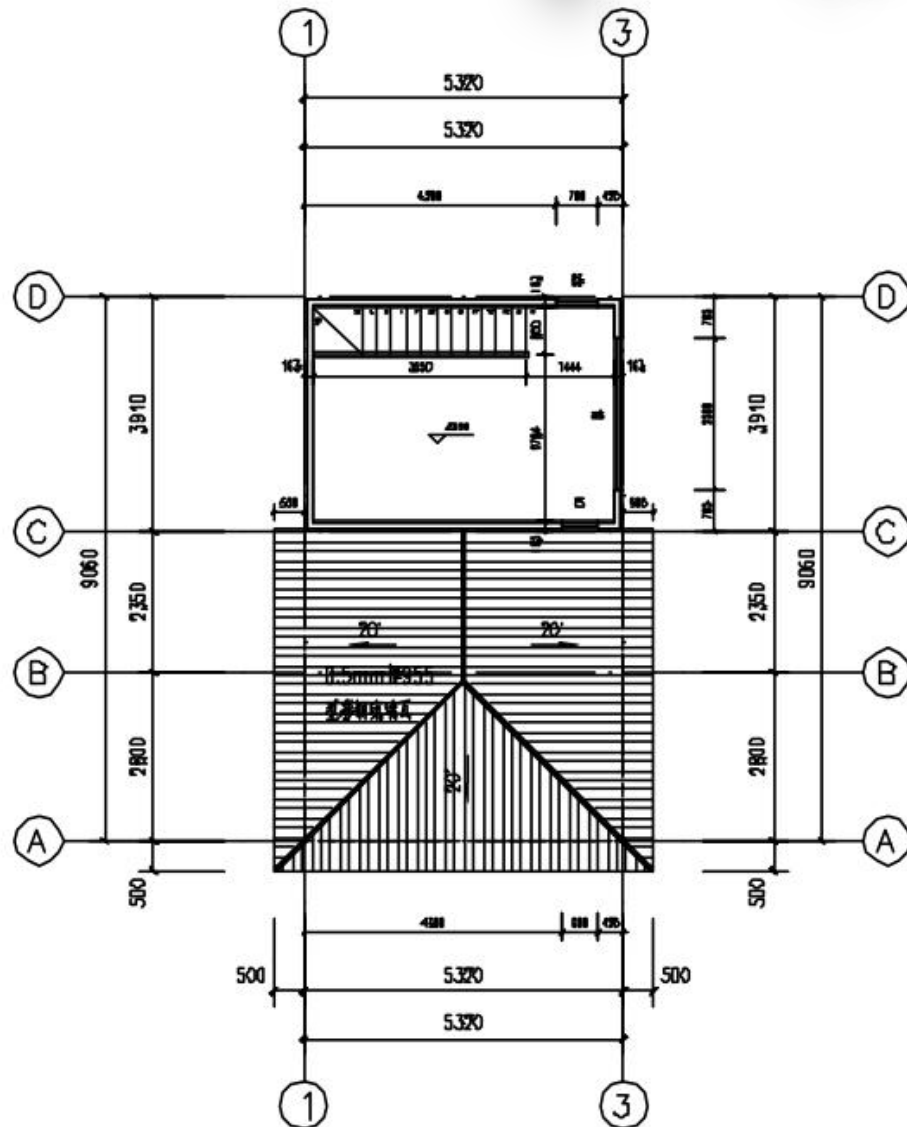
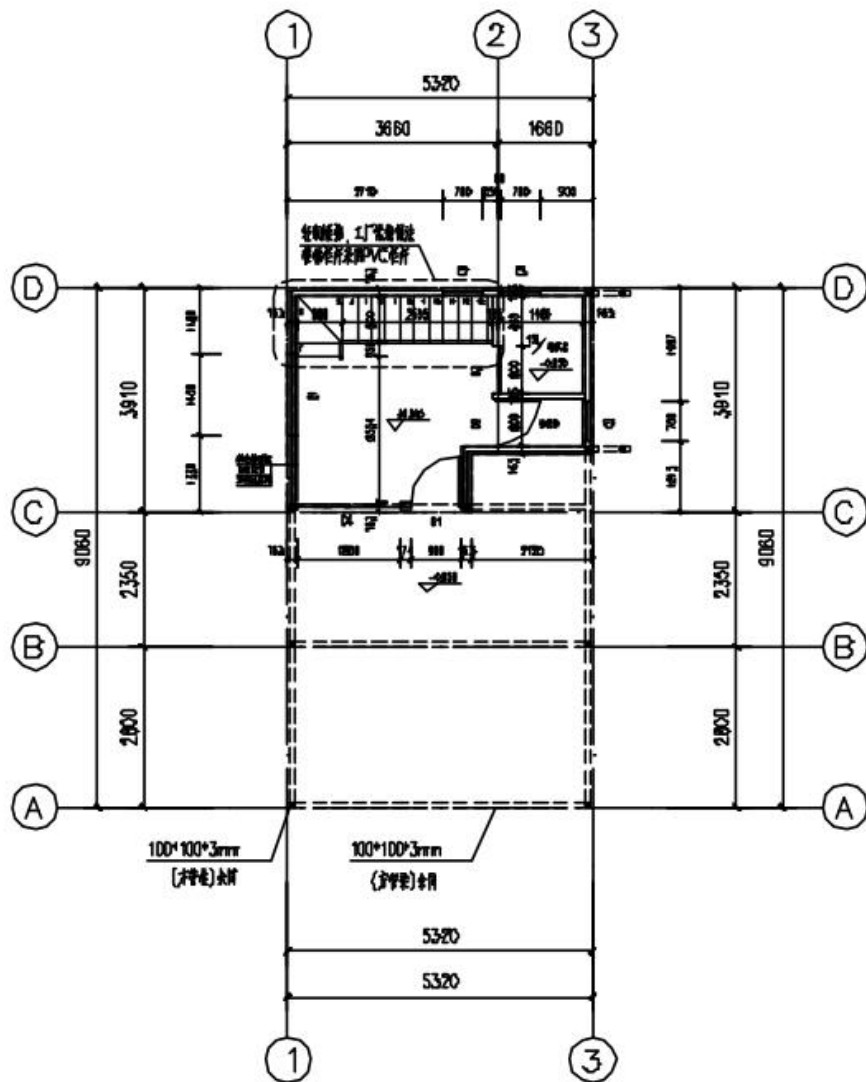
A-D 立面图 1:100



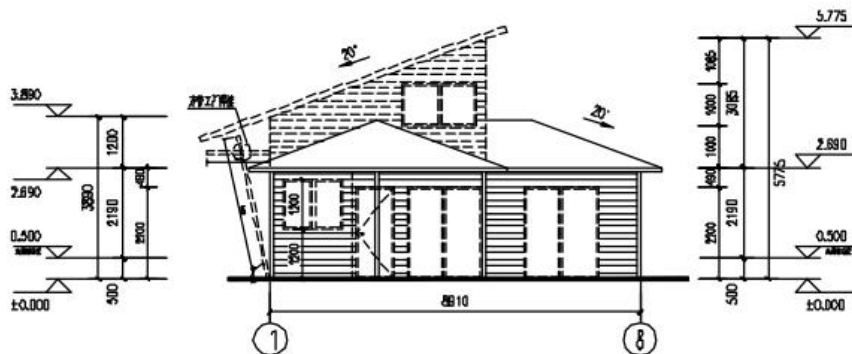
3-1 立面图 1:100



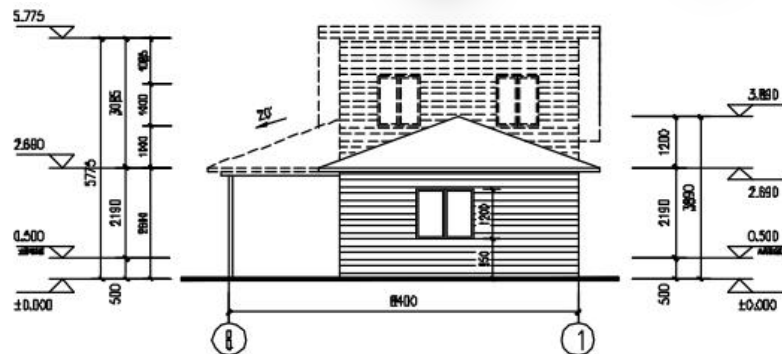
D-A 立面图 1:100



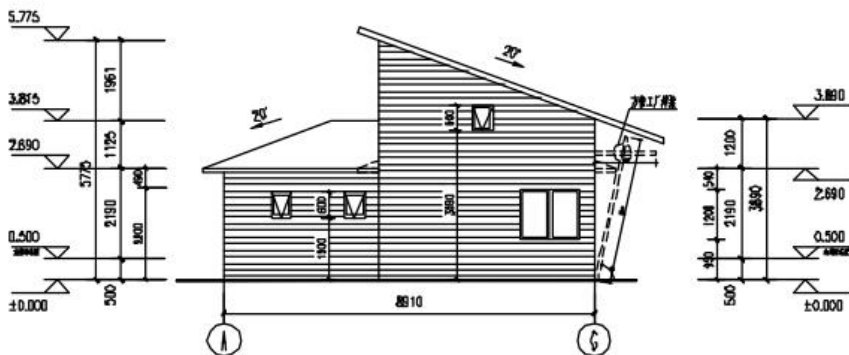
DESIGN



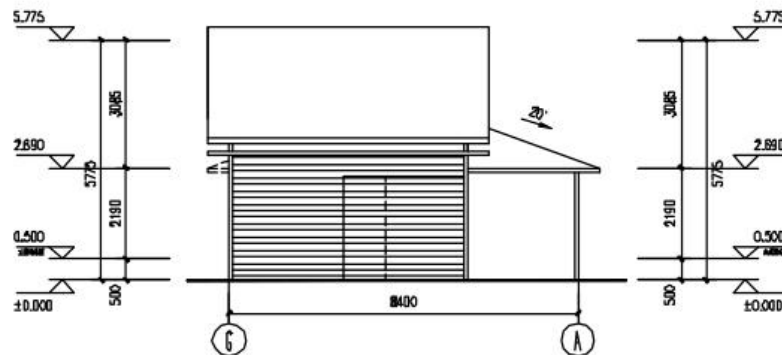
1-8 立面图 1:100



8-1 立面图 1:100

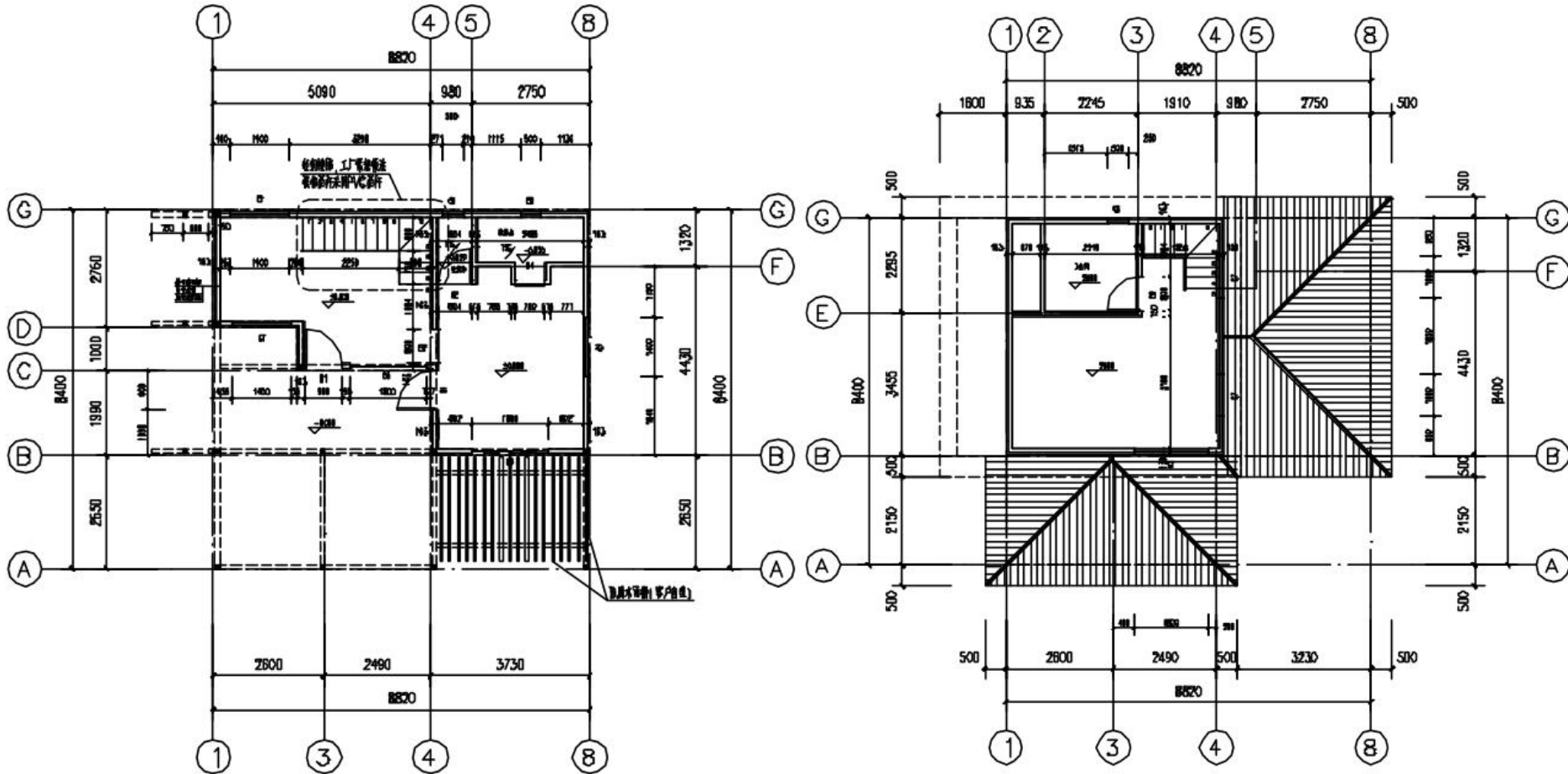


A-G 立面图 1:100

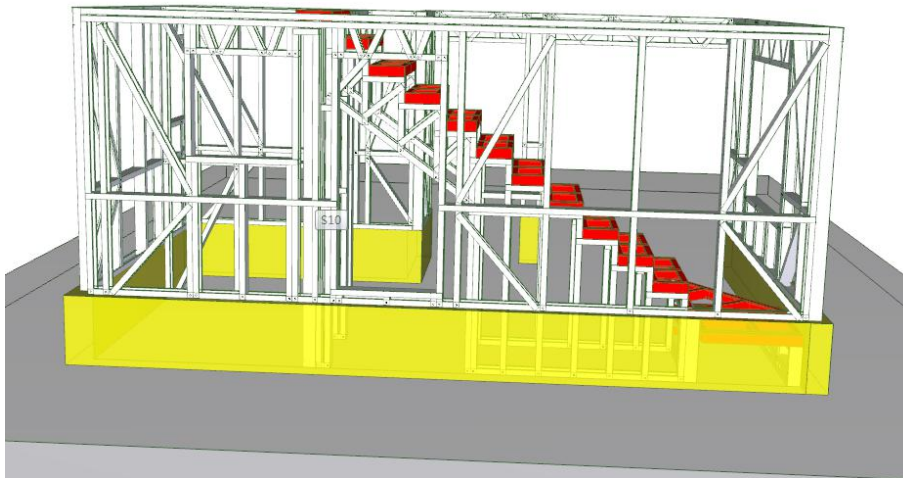
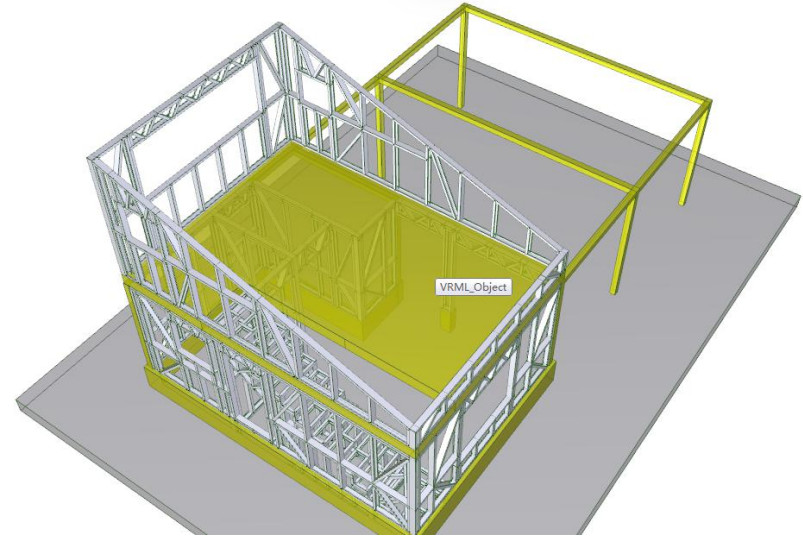
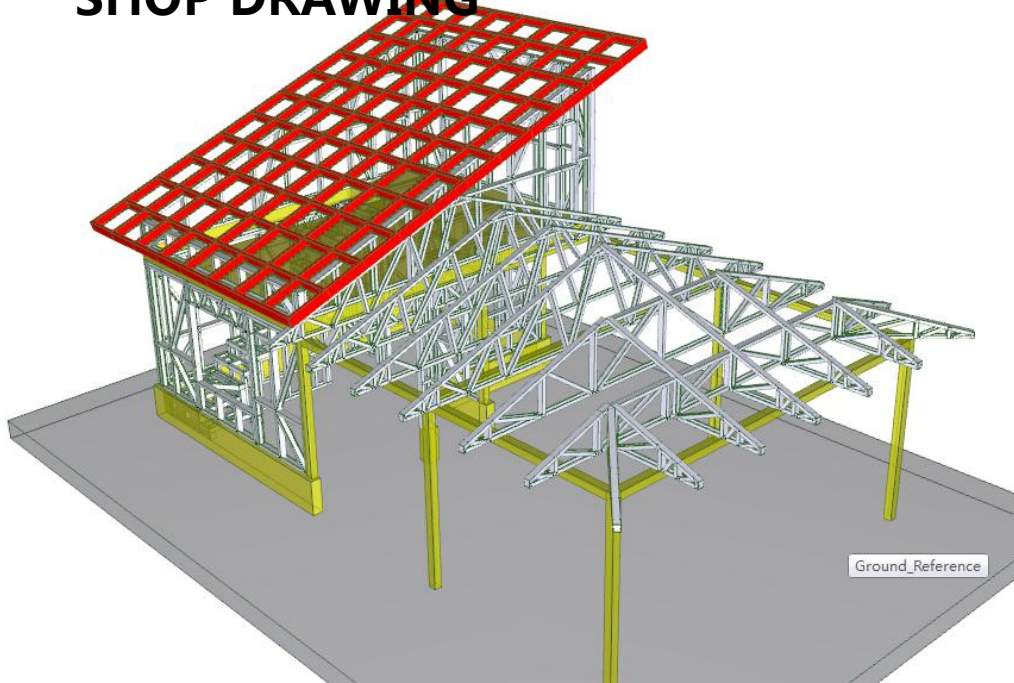


G-A 立面图 1:100

DESIGN



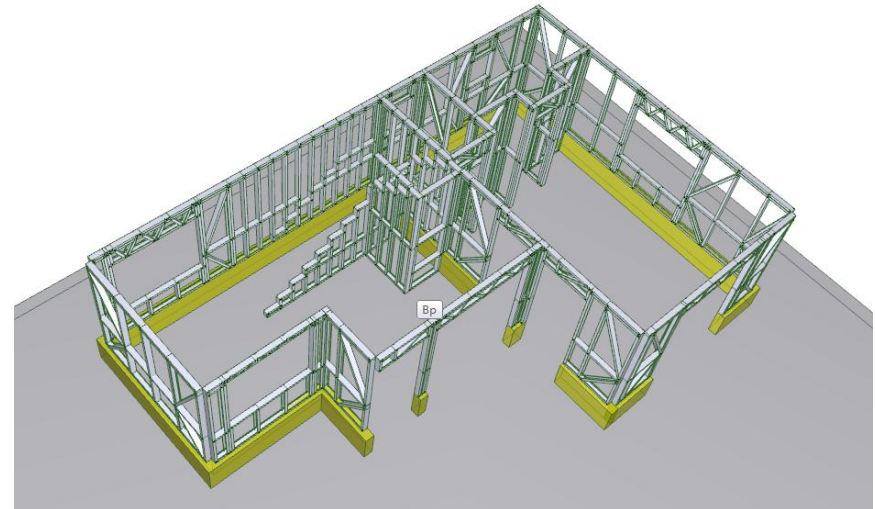
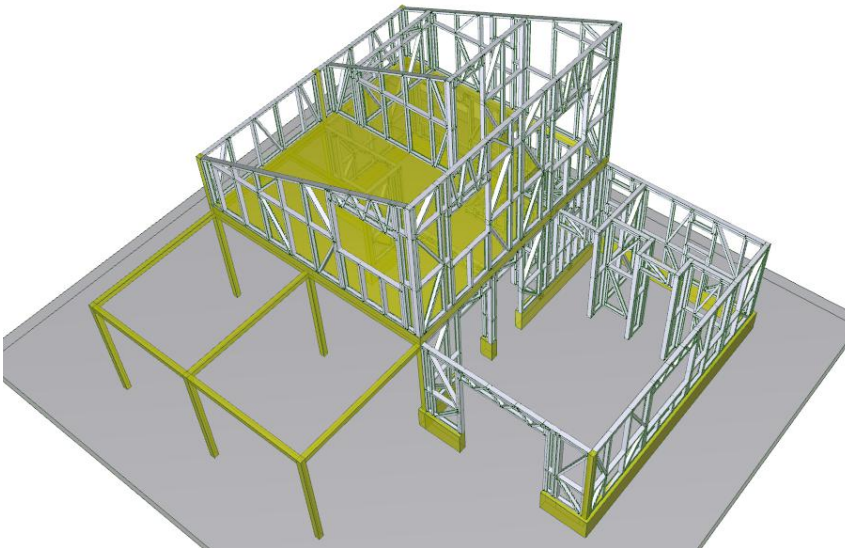
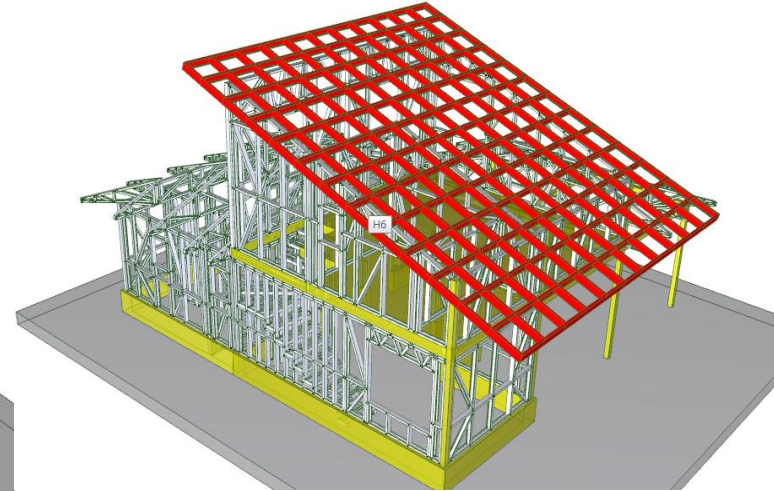
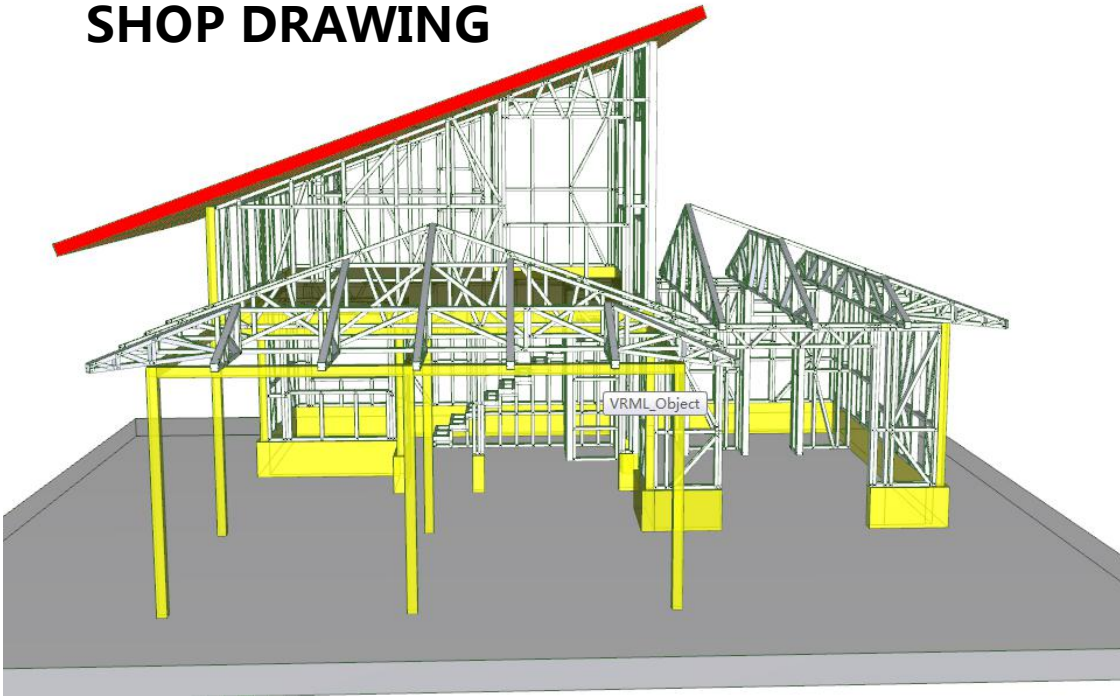
SHOP DRAWING



PTH shop drawing engineers adopt Tekla and FrameCAD structure deepening design software. Before the detailed design, it is necessary to check whether the technical information of the design drawing meets the technical requirements, and then carry out the detailed design and production drawing according to the final design drawing.

When deepening the design, it is necessary to ensure that the product assembly dimension deviation standard, welding quality technical requirements, structural parts connection nodes, product anti-corrosion process, etc. which meet the requirements of design technical specifications.

SHOP DRAWING



PRODUCTION & DELIVERY



PROCUREMENT :

PTH has a mature procurement supply chain, including product raw materials, kitchen and bathroom accessories, home equipment and other supporting facilities. Each year, PTH conducts quality assessments of suppliers, resolutely rejects unqualified suppliers, and guarantees the quality of products from the source.

PRODUCTION :

PTH owns hundreds of fully automatic mechanized production lines, which ensures high production efficiency and timely delivery. In the manufacturing process, PTH can provide production progress reports to customers through pictures and video.

PTH has a professional quality inspection team which takes strict quality control in each process, and make sure defect product never be delivered to client.

TRANSPORTATION :

PTH, who has more than 20 years of international logistics experience. can provide customers with the best transportation routes, customs declaration, commodity inspection and other services, and truly realizes "door to door."



Quality is the life of a enterprise and the foundation of sustainable development. PTH strictly follows the ISO9000 quality system and make quality control in each process from material procurement to finish product delivery.

For the outsourcing raw material and accessories, it is reported to the ICQC team for inspection. ICQC will inspect according to “Raw Material Inspection Regulations” , make sure the material technical specs and quality meets GB standard, then upload the inspection record, QC document and test report to ERP system.

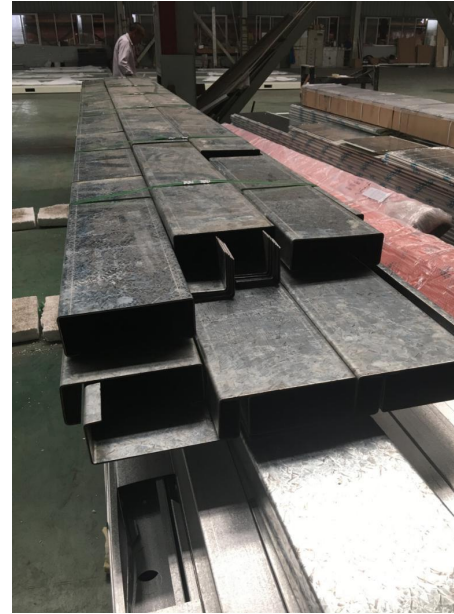
PRODUCTION PICTURES



PTH makes random inspection system for the manufacturing process. IPQC makes daily random inspection according to the quality requirement of each order, so as to avoid defect products.

The production team also set up process quality report system. Only those qualified products can be transferred to the next process.

PACKAGE & LOADING



PTH designs reasonable packaging scheme according to product structure characteristics / customer quality requirements. PTH adopts the unit design of parts in packaging, which effectively reduces the product packaging volume. Each unit part adopts independent small packaging, and multiple small packages are combined to form an overall packaging convenient for transportation and installation. And because of the overall packaging, it is convenient for loading and unloading, reducing the labor cost.

INSTALLATION



PTH will provide complete and detailed installation drawings for the product. PTH has professional photography and post-production personnel who can provide installation videos for the product and intuitively demonstrate the installation steps and installation details of the product.

PTH owns on-site installation guidance experience for dozens of projects such as Mozambican light steel villa resorts, Chilean container camps, etc. It can provide EPC construction services and technical guidance according to the needs of customers to ensure the smooth and safe construction of the houses required by customers and realize real "Check-in".

INSTALLATION



URL : www.pthhouse.com / www.putianhouse.com
E-mail : inquiry@putianhouse.com

INSTALLATION



INSTALLATION



INSTALLATION



URL : www.pthouse.com / www.putianhouse.com
E-mail : inquiry@putianhouse.com

INSTALLATION



CLIENT FEEDBACK



We use BIM system to manage and operate the whole project. For the maintenance, PTH provide online technical support or maintenance service on the site per client requirement.

Since the materials were not properly placed after being transported to the local area, a small part of the steel members were slightly corroded. After customer feedback, PTH responded promptly and provided solutions, and customers were satisfied with PTH's after-sales service.