

PTH

LGS Villa Project in Philippines

- 1.PO No. : PT160628**
- 2.Year : 2016**
- 3.Location : Philippines**
- 4.Building area : 450m²**
- 5.Category : light steel villa**
- 6.Purpose : residential**
- 7.Features : the natural ground is not flat, PTH provide the solution of steel structure floor with steel structure post + LGS wall frame and roof truss**



DESIGN



PTH owns 100+ architect and engineers at home and abroad, to provide customized design service for client with different requirements. We use the relevant information data of construction projects as the basis of the model to build the building model, and simulate the real information of the building through digital information simulation.

Features : This light steel villa project is for personal use, building area 450sqm , PTH supply the steel structure and LGS frame, the rest materials are taken care by client. Considering the natural ground is not flat, PTH provide the solution of steel structure floor with steel structure post + LGS wall frame and roof truss.

DESIGN



The preliminary design is made in accordance with client' s requirement and local building code.

After getting the permission by local authority, PTH will do the shop drawing for production.

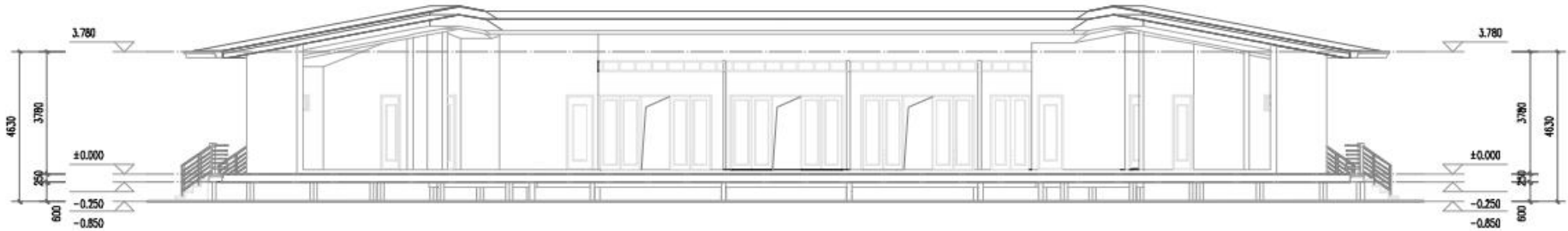
DESIGN



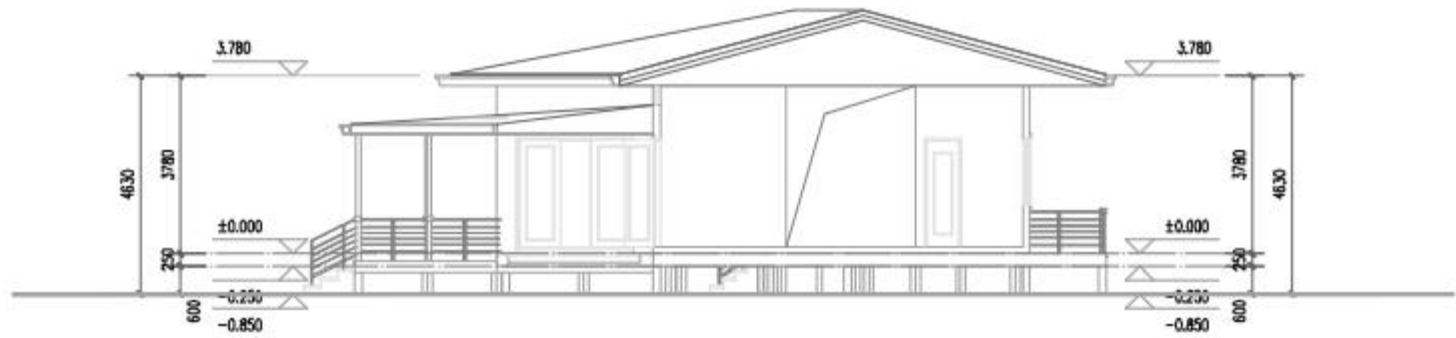
DESIGN



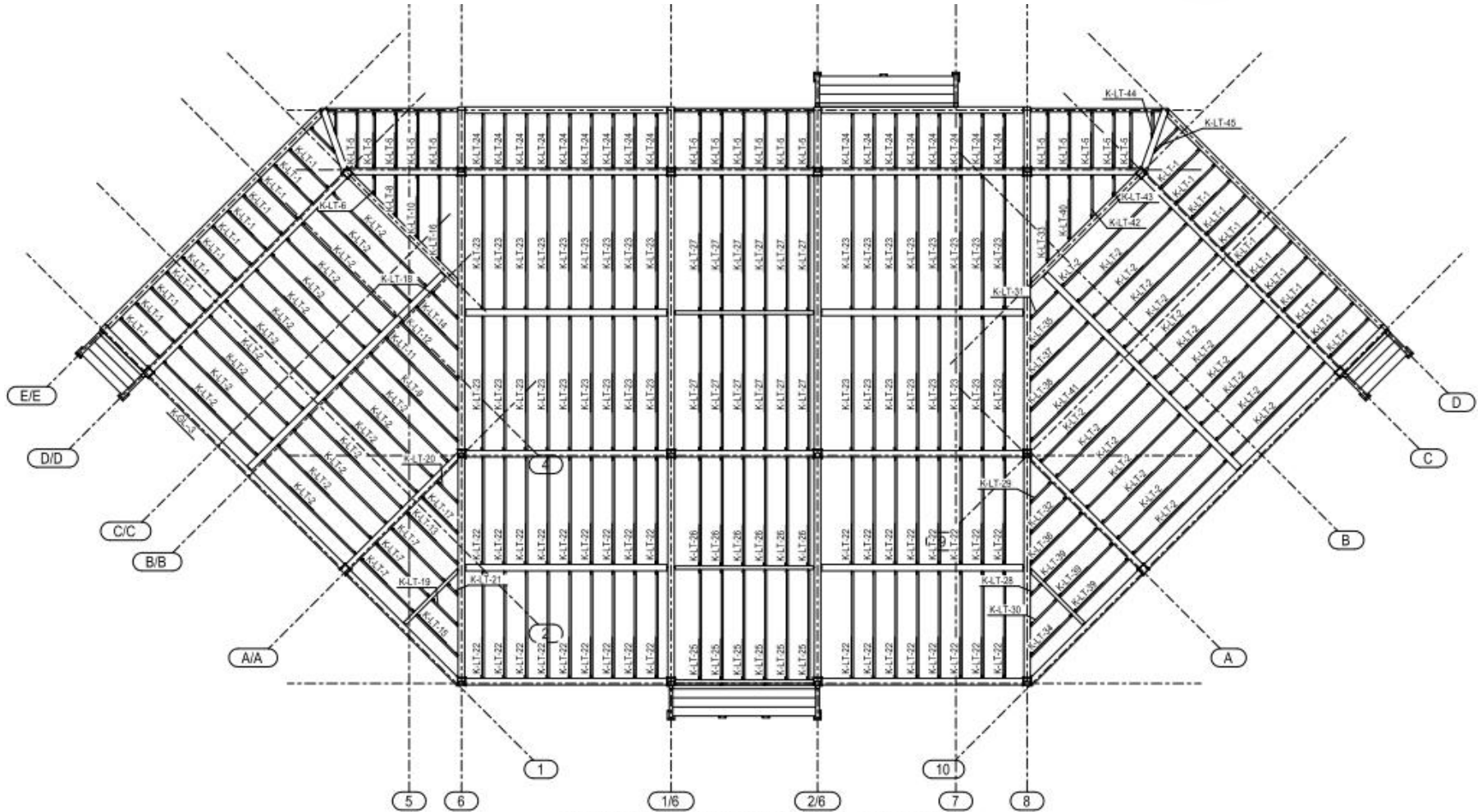
West Elevation 1:100



Section Plan 1-1 1:100

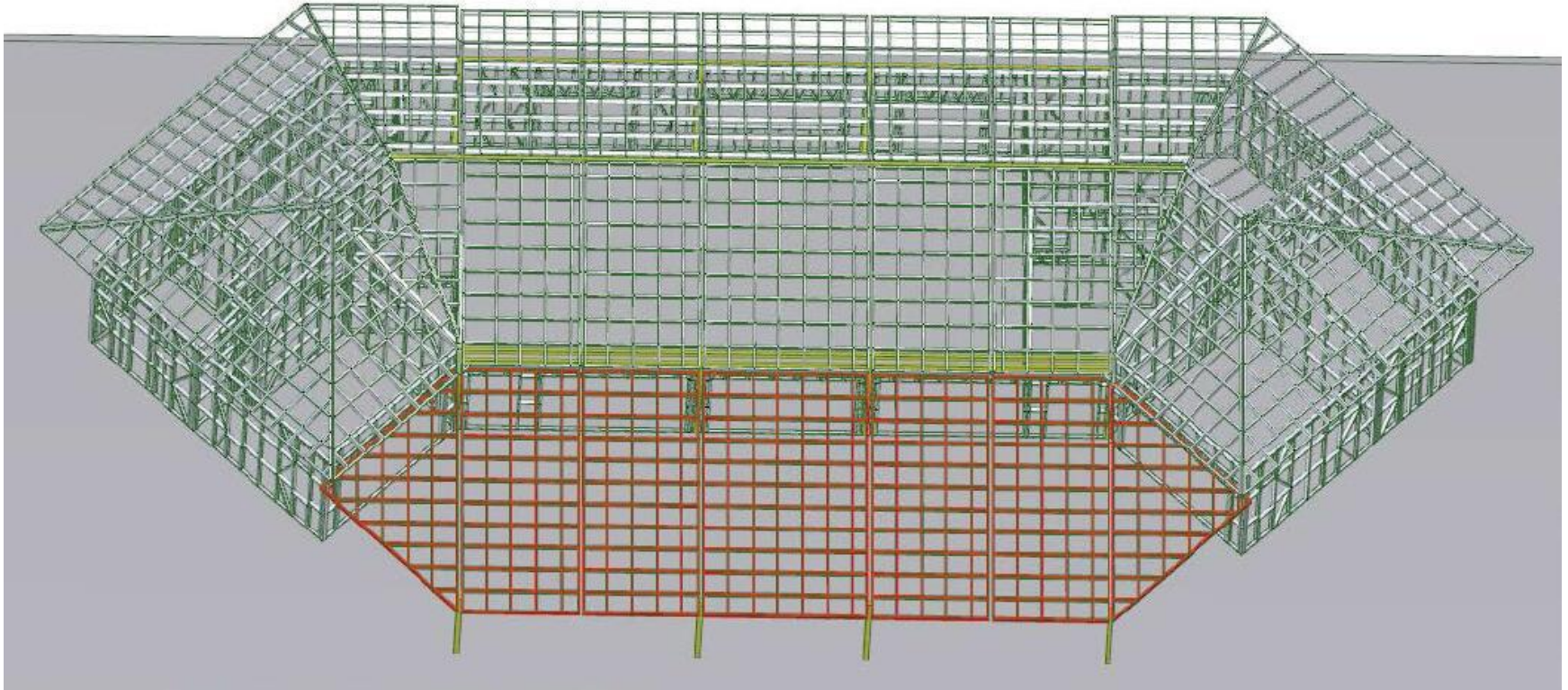


Section Plan 2-2 1:100



PURLIN LAYOUT PLAN +0.000

DESIGN



PRODUCTION



PROCUREMENT :

PTH has a mature procurement supply chain, including product raw materials, kitchen and bathroom accessories, home equipment and other supporting facilities. Each year, PTH conducts quality assessments of suppliers, resolutely rejects unqualified suppliers, and guarantees the quality of products from the source.

PRODUCTION :

PTH owns hundreds of fully automatic mechanized production line, which ensures high production efficiency and timely delivery. In the manufacturing process, PTH can provide production progress reports to customers through pictures and video. PTH has a professional quality inspection team which takes strict quality control in each process, and make sure defect product never be delivered to client.

TRANSPORTATION :

PTH, who has more than 20 years of international logistics experience. can provide customers with the best transportation routes, customs declaration, commodity inspection and other services, and truly realizes "door to door."



PRODUCTION

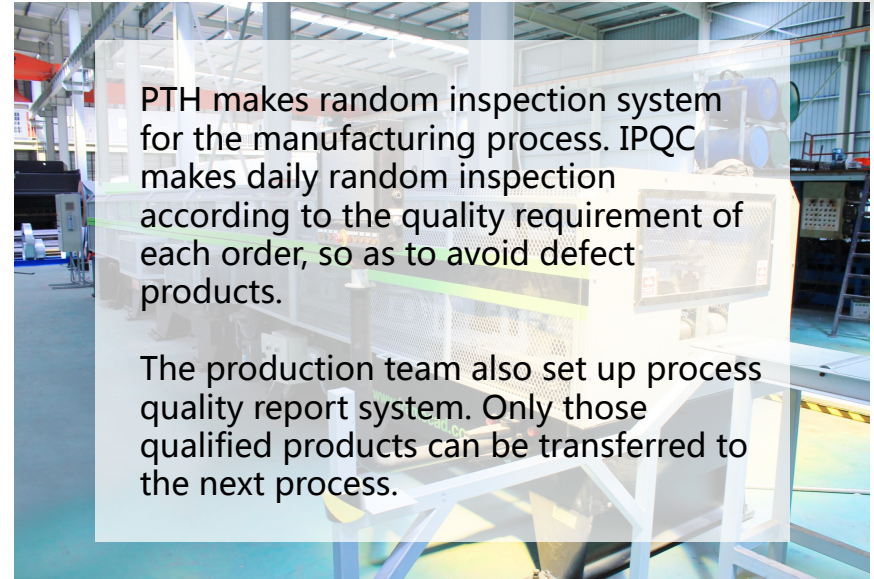


Quality is the essence of an enterprise and the foundation of sustainable development. PTH strictly follows the ISO9000 quality system and makes quality control in each process from material procurement to final product delivery.

For outsourcing raw materials and accessories, it is reported to the ICQC team for inspection. ICQC will inspect according to "Raw Material Inspection Regulations", ensure the material technical specifications and quality meet GB standards, then upload the inspection record, QC document and test report to the ERP system.

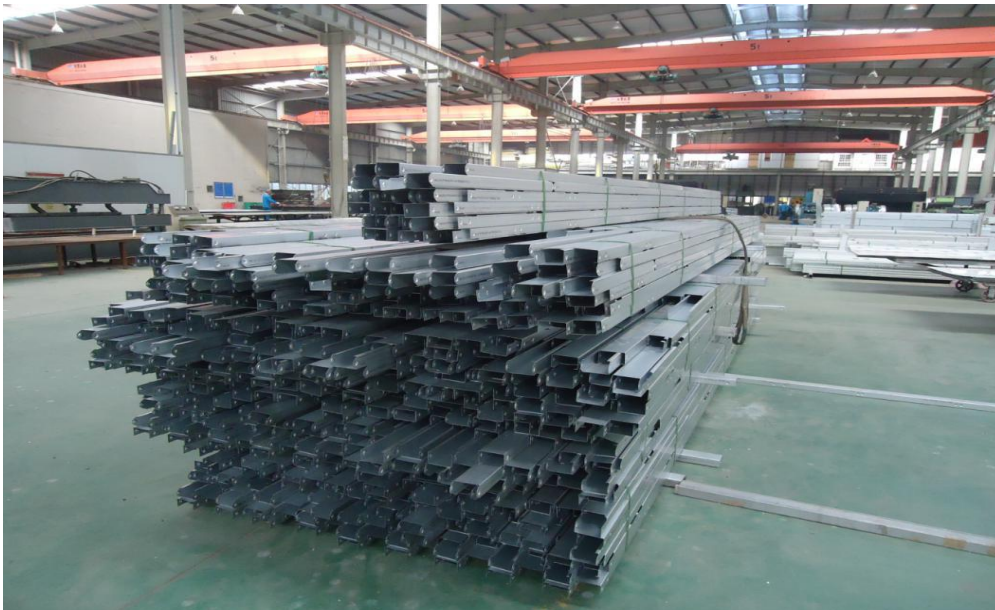
URL : www.pthhouse.com / www.putianhouse.com
E-mail : inquiry@putianhouse.com

PRODUCTION



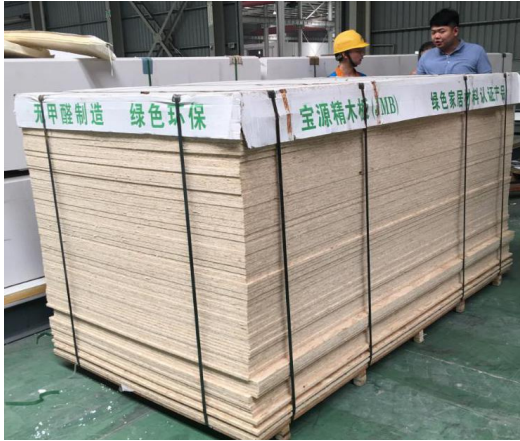
PTH makes random inspection system for the manufacturing process. IPQC makes daily random inspection according to the quality requirement of each order, so as to avoid defect products.

The production team also set up process quality report system. Only those qualified products can be transferred to the next process.



PACKING & LOADING

PTH makes the most reasonable package plan according to the structure characteristics and quality requirement. The spare parts of each module is packed in a separate package, these small package modular combination ensures a easy transportation and installation, which in return makes the loading and unloading much easier, and greatly reduces labor cost.



INSTALLATION



PTH will provide complete and detailed installation drawings for the product. PTH has professional photography and post-production personnel who can provide installation videos for the product and intuitively demonstrate the installation steps and installation details of the product.

PTH owns on-site installation guidance experience for dozens of projects such as Mozambican light steel villa resorts, Chilean container camps, etc. It can provide EPC construction services and technical guidance according to the needs of customers to ensure the smooth and safe construction of the houses required by customers and realize real "Check-in".

INSTALLATION



URL : www.pthhouse.com / www.putianhouse.com
E-mail : inquiry@putianhouse.com

INSTALLATION



**URL : www.pthhouse.com / www.putianhouse.com
E-mail : inquiry@putianhouse.com**

INSTALLATION



INSTALLATION

