

PTH

Prefab bathroom in Panama

- 1. Project No. : PNWK16006**
- 2. Date : 2016**
- 3. Location : Panama**
- 4. Scale : 110 sets single bathroom+67 sets double bathroom+7 sets 4ppl bathroom**
- 5. Category : Prefab house**
- 6. Function: Governmen tender project**
- 7. Project Features: Design and quotation based on government bidding requirements ,it is a government project to improve local toilet conditions**



DESIGN



PTH owns 100+ architect and engineers at home and abroad, to provide customized design service for client with different requirements. We use the relevant information data of construction projects as the basis of the model to build the building model, and simulate the real information of the building through digital information simulation.

At present, we have finished the Revit research and development of company's products, laying a solid foundation to finish design effectively and accurately and also presenting details and three dimensional effects of our company's products to customers

Project Features:

The client is a builder, mainly doing prefab house projects, there are private projects and government projects. The toilet types include single toilets, double toilets and 4-person toilets, which are used for health services in remote areas.

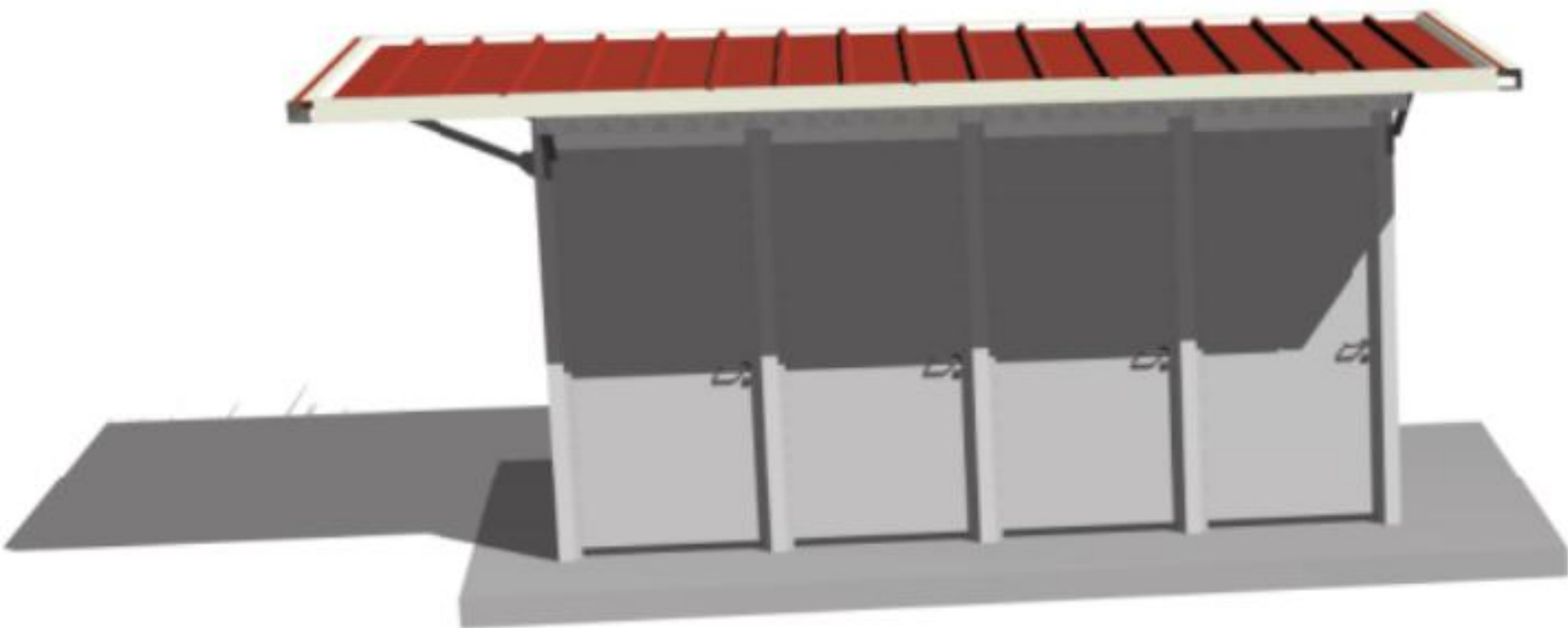
The building adopts modular sandwich panel + steel frame and aluminum corner column as the wall structure, corrugated sandwich + roof, purlins as roof structure, which is a single-layer simple modular building.

DESIGN



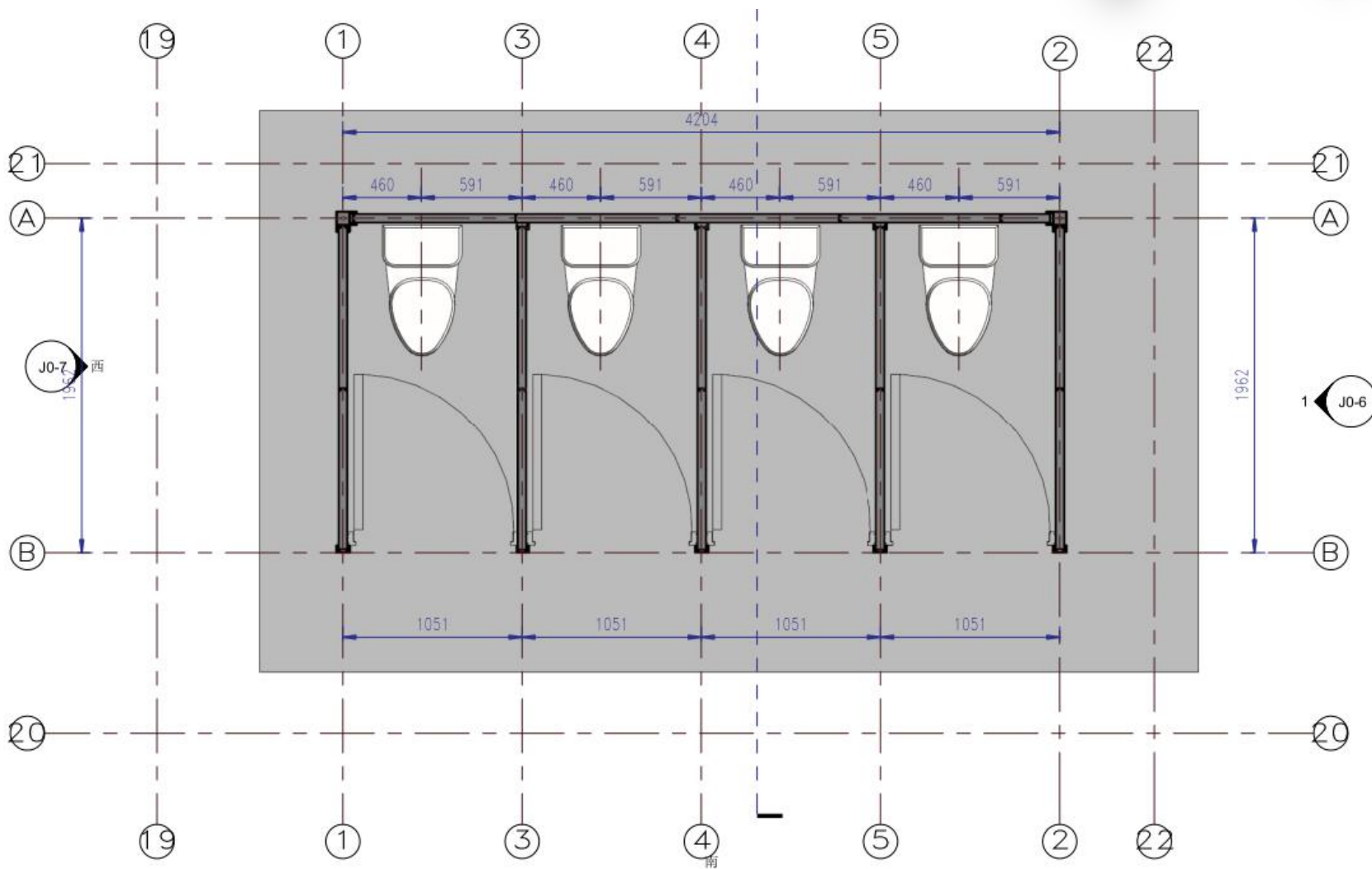
The preliminary design is made in accordance to client' s requirement and local building code. After getting the permission by local authority, PTH will do the shop drawing for production.

DESIGN

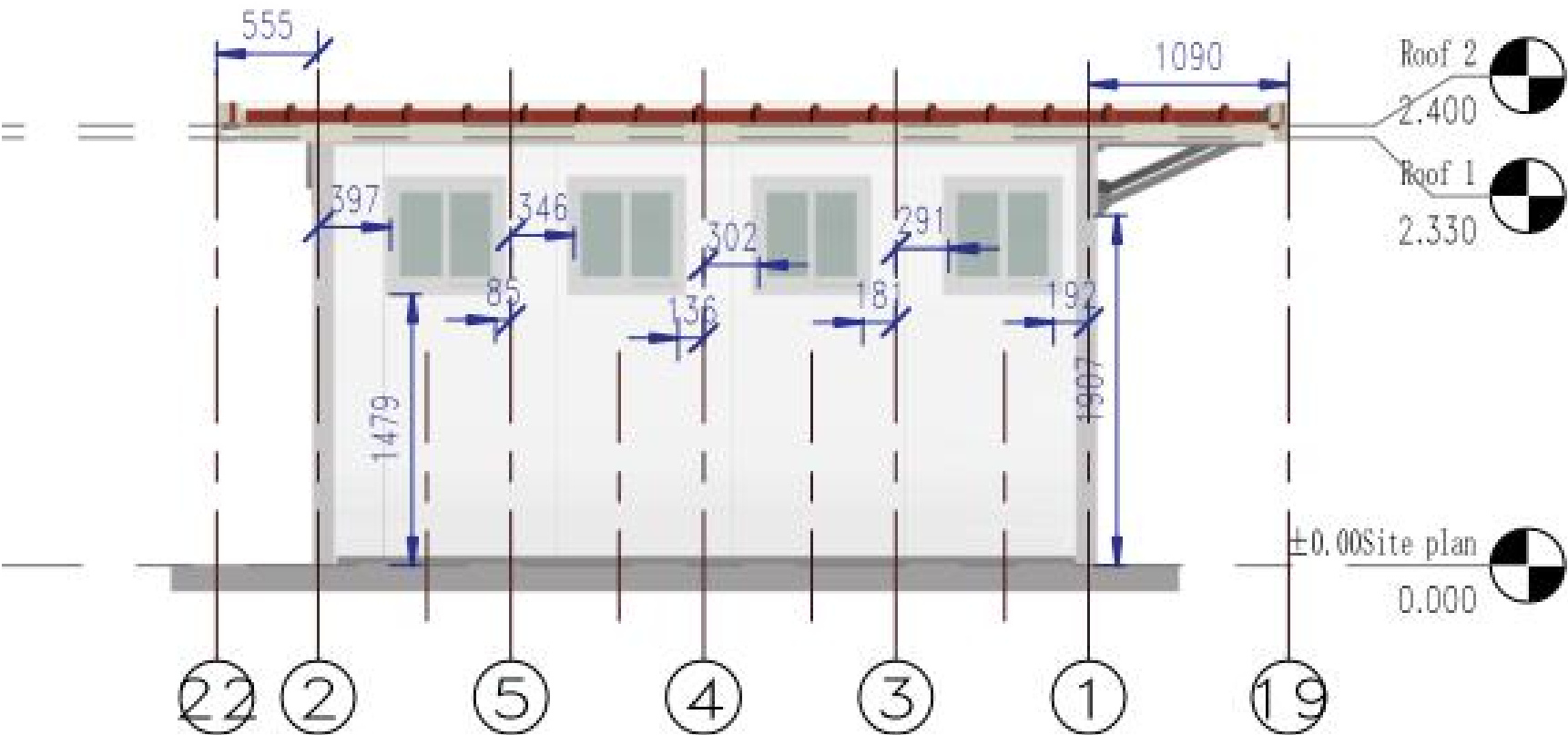


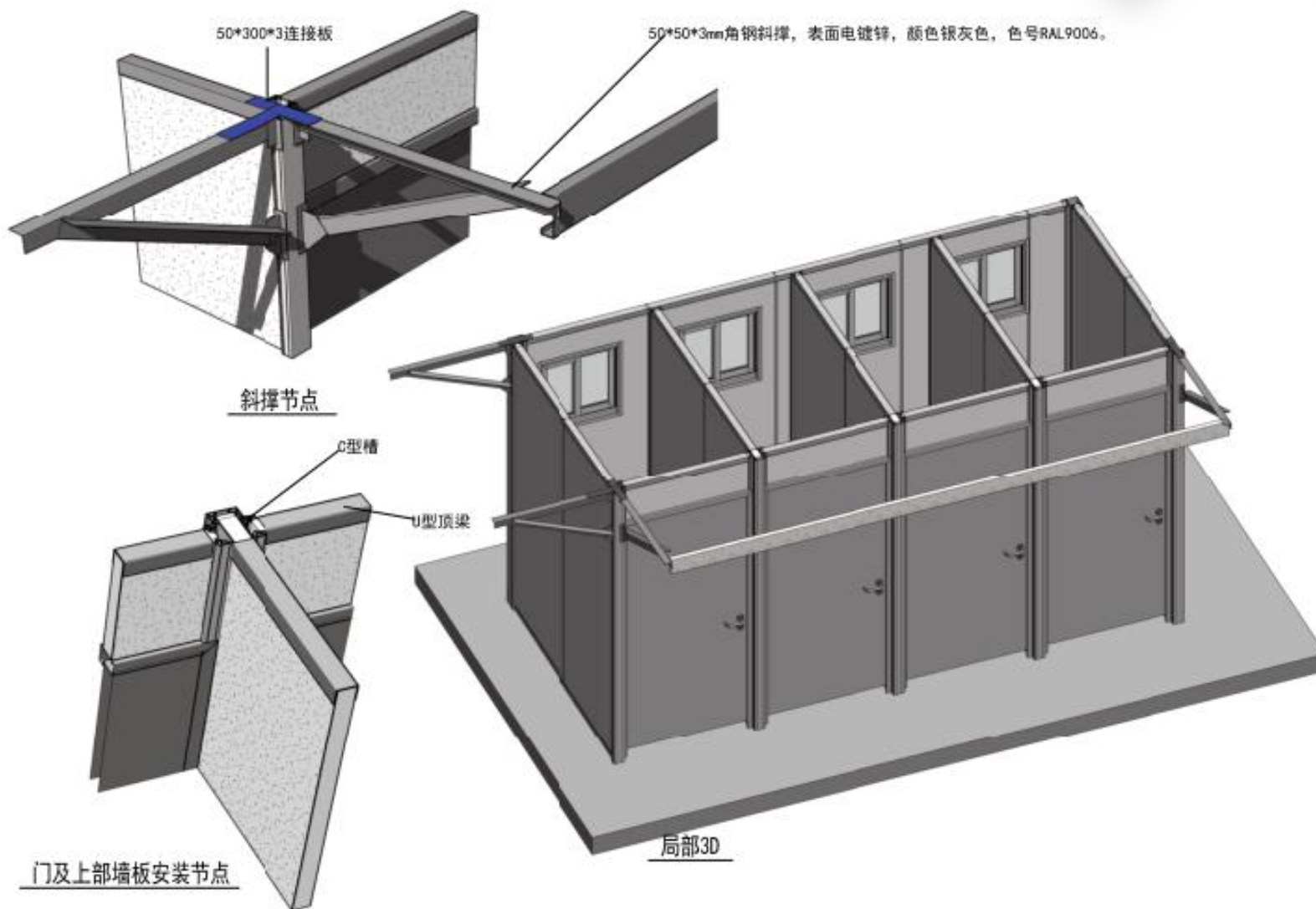
**URL : www.pthhouse.com / www.putianhouse.com
E-mail : inquiry@putianhouse.com**

DESIGN



DESIGN





PRODUCTION & DELIVERY



PROCUREMENT :

PTH has a mature procurement supply chain, including product raw materials, kitchen and bathroom accessories, home equipment and other supporting facilities. Each year, PTH conducts quality assessments of suppliers, resolutely rejects unqualified suppliers, and guarantees the quality of products from the source.

PRODUCTION :

PTH owns hundreds of fully automatic mechanized production lines, which ensures high production efficiency and timely delivery. In the manufacturing process, PTH can provide production progress reports to customers through pictures and video. PTH has a professional quality inspection team which takes strict quality control in each process, and make sure defect product never be delivered to client.

TRANSPORTATION :

PTH, who has more than 20 years of international logistics experience. can provide customers with the best transportation routes, customs declaration, commodity inspection and other services, and truly realizes "door to door."



PRODUCTION PICTURES



Quality is the life of a enterprise and the foundation of sustainable development. PTH strictly follows the ISO9000 quality system and make quality control in each process from material procurement to finish product delivery.

For the outsourcing raw material and accessories, it is reported to the ICQC team for inspection. ICQC will inspect according to "Raw Material Inspection Regulations", make sure the material technical specs and quality meets GB standard, then upload the inspection record, QC document and test report to ERP system.

PRODUCTION PICTURES

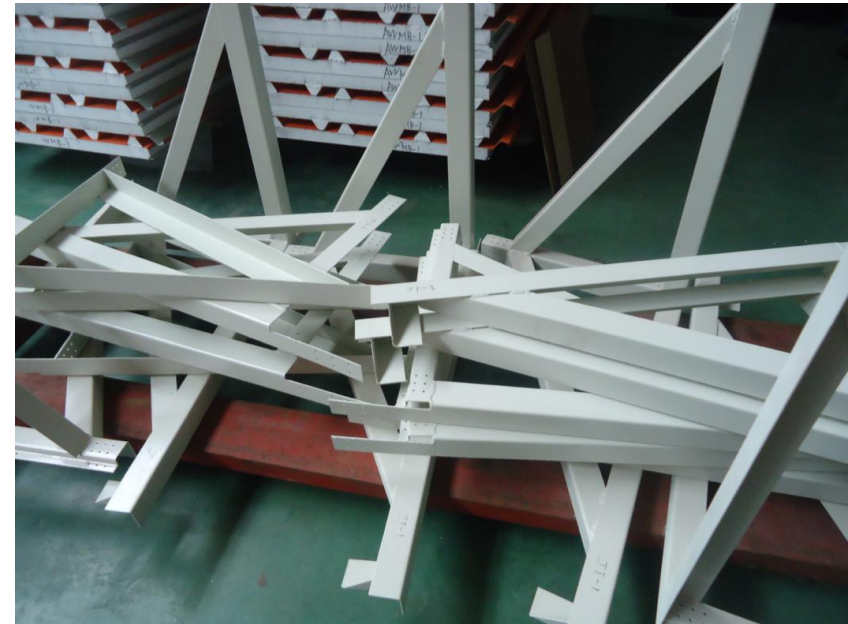
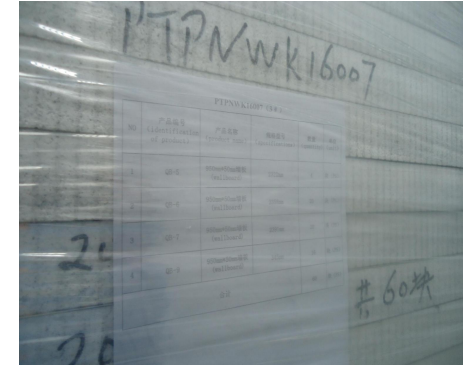


PTH makes random inspection system for the manufacturing process. IPQC makes daily random inspection according to the quality requirement of each order, so as to avoid defect products.

The production team also set up process quality report system. Only those qualified products can be transferred to the next process.

PACKAGE & LOADING

PTH designs reasonable packaging scheme according to product structure characteristics / customer quality requirements. PTH adopts the unit design of parts in packaging, which effectively reduces the product packaging volume. Each unit part adopts independent small packaging, and multiple small packages are combined to form an overall packaging convenient for transportation and installation. And because of the overall packaging, it is convenient for loading and unloading, reducing the labor cost.



Installation



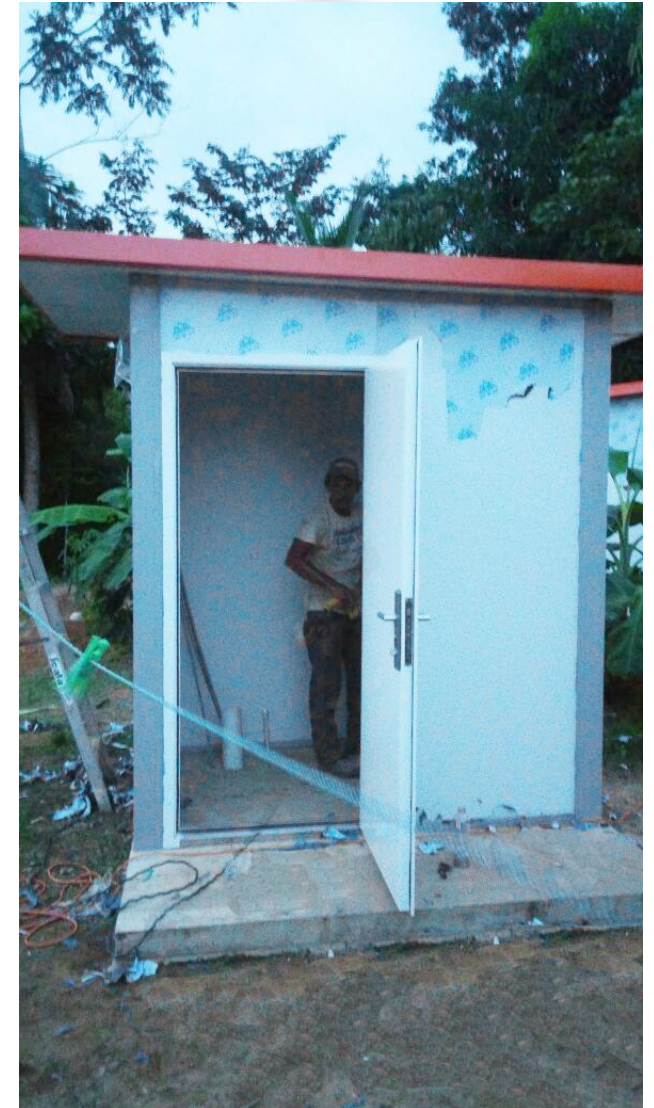
PTH will provide complete and detailed installation drawings for the product. PTH has professional photography and post-production personnel who can provide installation videos for the product and intuitively demonstrate the installation steps and installation details of the product.

PTH owns on-site installation guidance experience for dozens of projects such as Mozambican light steel villa resorts, Chilean container camps, etc. It can provide EPC construction services and technical guidance according to the needs of customers to ensure the smooth and safe construction of the houses required by customers and realize real "Check-in".

The customer asked PTH to send a senior engineer to the site for guiding installation. The whole process took 48 days. Before shipping, PTH also provided customers with a list of tools required for installation, leaving a very professional impression to customers.



INSTALLATION



INSTALLATION



INSTALLATION



INSTALLATION



CLIENT FEEDBACK



URL : www.pthhouse.com / www.putianhouse.com
E-mail : inquiry@putianhouse.com

CLIENT FEEDBACK

