

PTH

ZAMBIA CONTAINER CLASSROOM

1. Project No : PTCFXD15002
2. Time : 2016
3. Location : Zambia
4. Scale : 20 units
6058×2438×2991mm
container houses
5. Category : Container
house
6. Application : Student' s
dormitory
7. Feature : two-level
container house with
customized height



DESIGN



PTH owns 100+ architect and engineers at home and abroad, to provide customized design service for client with different requirements. We use the relevant information data of construction projects as the basis of the model to build the building model, and simulate the real information of the building through digital information simulation.

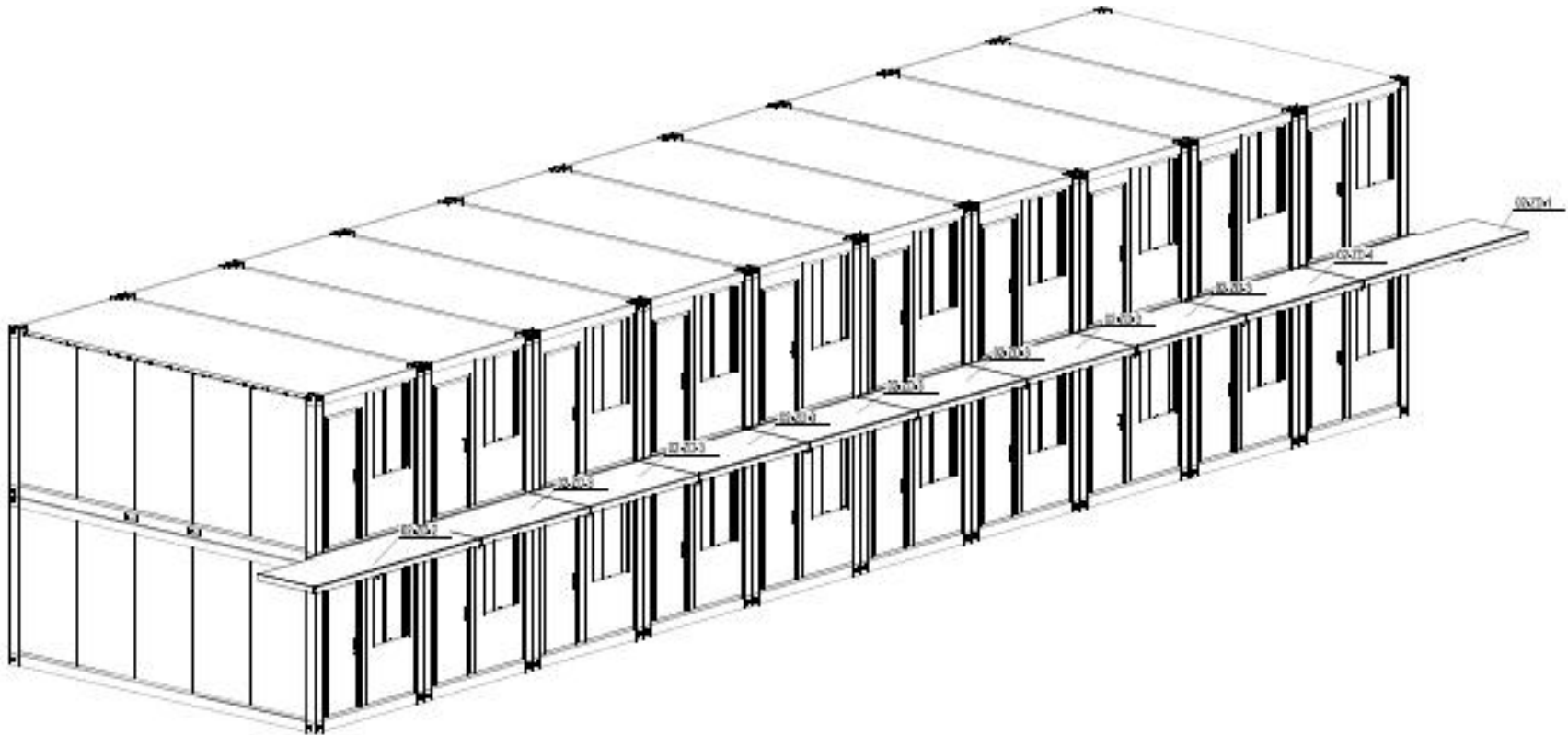
Features : This project is used for the student' s dormitory for Chreso University in Zambia. It includes 20 units container house modules with attached toilets. It is a 2-level building, each level 2991mm high. It is equipped with stairs on both ends, walkway for the second floor and additional pitch roof. PTH also supply the bunk bed, desk and chair, cabinet etc.

Considering the height of bunk beds, PTH increases the container height to 2991mm. The column is made into bright red per client requirement. The windows is equipped with roll-up shutter and mosquito-proof mesh to prevent mosquito and insect from coming into the dorm.

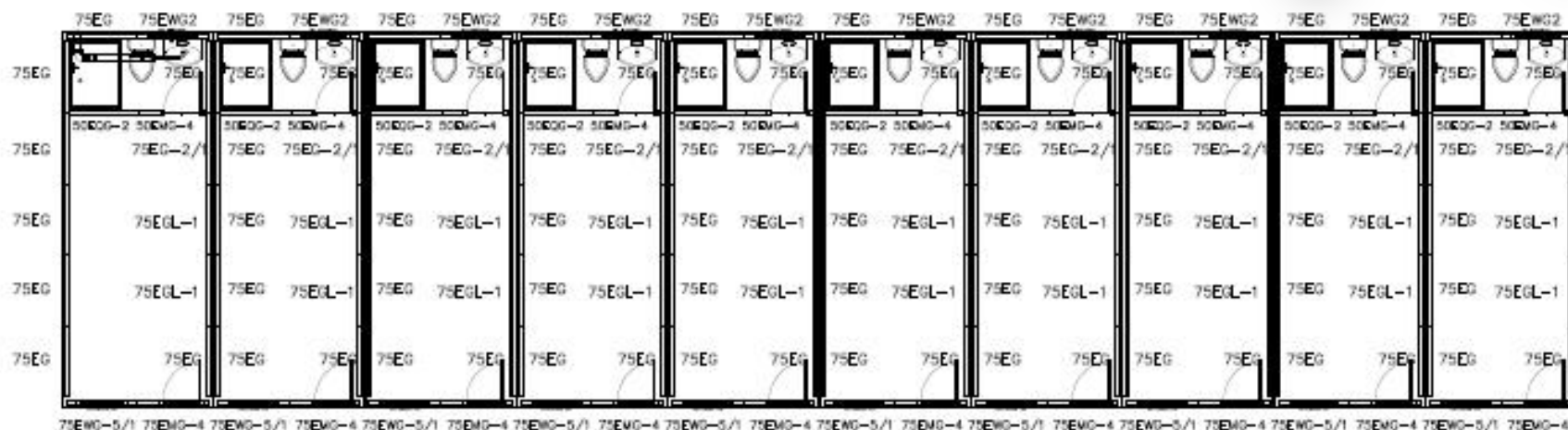
DESIGN



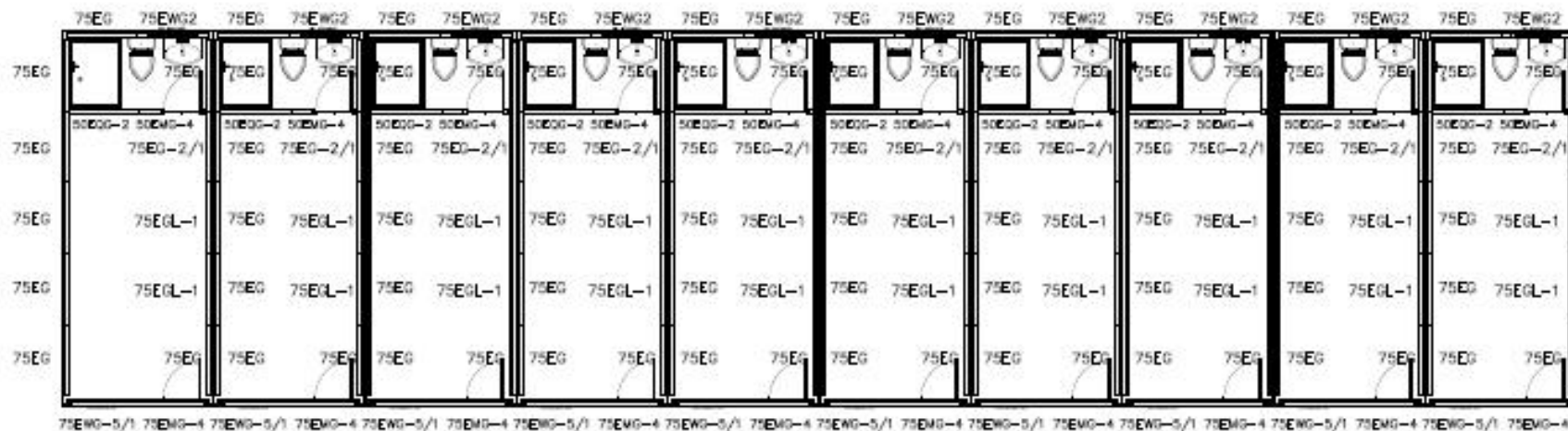
The preliminary design is made in accordance with client' s requirement and local building code.
After getting the permission by local authority, PTH will do the shop drawing for production.



DESIGN

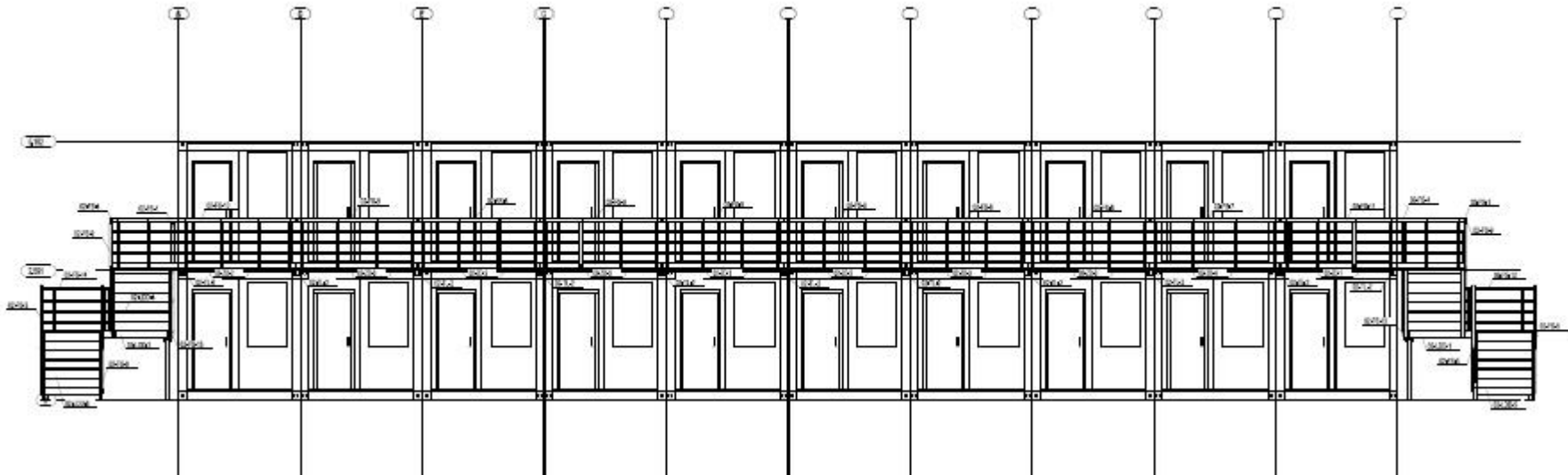
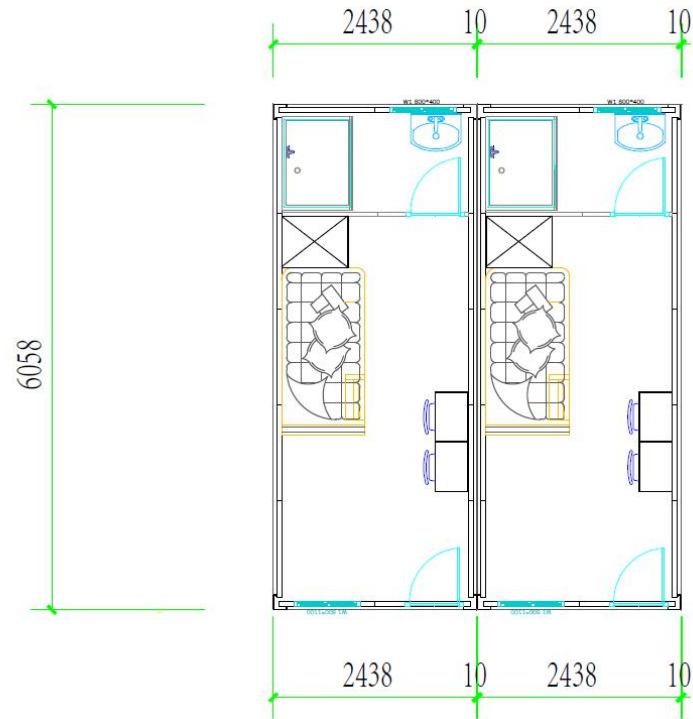


ground floor plan



first floor plan

DESIGN



PRODUCTION & DELIVERY



PROCUREMENT :

PTH has a mature procurement supply chain, including product raw materials, kitchen and bathroom accessories, home equipment and other supporting facilities. Each year, PTH conducts quality assessments of suppliers, resolutely rejects unqualified suppliers, and guarantees the quality of products from the source.

PRODUCTION :

PTH owns hundreds of fully automatic mechanized production lines, which ensures high production efficiency and timely delivery. In the manufacturing process, PTH can provide production progress reports to customers through pictures and video. PTH has a professional quality inspection team which takes strict quality control in each process, and make sure defect product never be delivered to client.

TRANSPORTATION :

PTH, who has more than 20 years of international logistics experience. can provide customers with the best transportation routes, customs declaration, commodity inspection and other services, and truly realizes "door to door."



PRODUCTION PICTURES



Quality is the essence of a enterprise and the foundation of sustainable development. PTH strictly follows the ISO9000 quality system and make quality control in each process from material procurement to finish product delivery.

For the outsourcing raw material and accessories, it is reported to the ICQC team for inspection. ICQC will inspect according to "Raw Material Inspection Regulations", make sure the material technical specs and quality meets GB standard, then upload the inspection record, QC document and test report to ERP system.

PRODUCTION PICTURES



PTH makes random inspection system for the manufacturing process. IPQC makes daily random inspection according to the quality requirement of each order, so as to avoid defect products.

The production team also set up process quality report system. Only those qualified products can be transferred to the next process.



PACKAGE & LOADING



PTH makes the most reasonable package plan according to the structure characteristics and quality requirement. The modular package design of the spare part effectively reduce the package volume. The spare parts of each module is packed in a separate package, these small package modular combination ensures a easy transportation and installation, which in return makes the loading and unloading much easier, and greatly reduces labor cost.



INSTALLATION



PTH will provide complete and detailed installation drawings for the product. PTH has professional photography and post-production personnel who can provide installation videos for the product and intuitively demonstrate the installation steps and installation details of the product.

PTH owns on-site installation guidance experience for dozens of projects such as Mozambican light steel villa resorts, Chilean container camps, etc. It can provide EPC construction services and technical guidance according to the needs of customers to ensure the smooth and safe construction of the houses required by customers and realize real "Check-in".

INSTALLATION



CLIENT' S FEEDBACK



We use BIM system to manage and operate the whole project. For the maintenance, PTH provide online technical support or maintenance service on the site per client requirement.

This project is made of our regular container modules, no special requirement and problem during construction. We have cooperation with client for more projects.